



The new degree of comfort.™

COMF^oRT

YOU CAN DEPEND ON

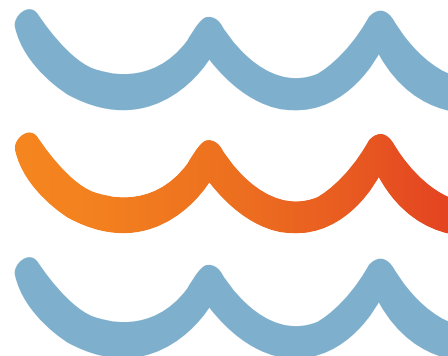


Residential Gas Water Heaters:

More hot water and lower
operating costs

- Best known brand
- Best FVIR solution
- Best quality, fewer call backs
- Full product line and parts
- Largest line of ENERGY STAR® water heaters

NEW
PROFESSIONAL
LINE
INCLUDED



Gas Water Heaters Designed for Professionals By Professionals

With the introduction of the new Rheem Professional Product Line, you now have a full range of gas models organized into three product tiers (*Prestige*, *Classic Plus* and *Classic*) to make selling and upselling easier. And you can't miss the bold new look of the Rheem Professional. It's beauty and brains will drive sales for your business. Advanced diagnostics, enhanced-flow brass drain valves and maintenance free FVIR system make the new Professional line an attractive choice for busy plumbers. Having the largest selection of ENERGY STAR® models ensures homeowners can reduce their energy costs and greenhouse emissions for years to come. That's Rheem ingenuity... And then some.

Vent Hood

Connects the water heater to the venting system. It aids in assisting in the updraft movement of the combustion gasses.

Temperature and Pressure Relief Valve

Commonly referred to as the "T&P" valve. This safety device opens to allow water to escape if the tank pressure or temperature becomes excessive.

Cold Water Inlet and Dip Tube

The connection point for incoming cold water. The inlet connects directly to a dip tube which directs the incoming water to the bottom of the tank.

Gas Control/Thermostat

Maintains desired temperature of the water by regulating the flow of fuel to the burner.

Enhanced-Flow Brass Drain Valve

Allows the tank to be emptied should service be required.

Thermocouple

Senses the presence or absence of the pilot flame to determine whether it is OK for the gas valve to open.

Plastic Line Nipples/Heat Traps

Thermoplastic lined nipples impede galvanic corrosion. "Heat trap" nipples also contain a check valve to reduce heat loss between hot water in the tank and cold water pipes.

Exclusive Rheemglas® Porcelain Enamel Tank Lining

Engineered for durability and long tank life.

Anode Rod

The patented R-Tech anode rod protects tank against premature corrosion.

Flue Baffle

Slows air movement through the flue. By keeping the combustion gases in the flue longer, more heat is transferred to the water in the tank.

EverKleen™ Self Cleaning System

This patented system creates a turbulent swirling action that reduces sediment and improves efficiency.

Burner Assembly

Heats the water in the tank by using a flame from either natural gas or liquid propane.



The Rheem Guardian System™



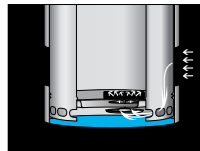
Flammable Vapor Ignition Resistance
Guardian is the best-in-class FVIR System that's engineered to exceed ANSI standards.

Exclusive, Air Shut-Off System
It shuts off gas and air supplies – providing double protection.



Flame Arrestor Plate
A specially-designed flame arrestor prevents ignition of vapors outside the combustion chamber.

Superior Air Filtration
It prevents the flame arrestor from becoming clogged by lint, dust and oil.



Maintenance-Free! No Filters to Clean!
Guardian System has no filters to service, replace or clean.

Standard Replacement Parts
Guardian System incorporated a standard gas valve and Thermocouple – easy to replace.



It's Easy to Light
No matches are required with the Rheem Guardian System.

Plus...

- Guardian System models are high altitude compliant – some models certified for applications up to 6,000 and 10,200 feet above sea level.
- Zero clearance to combustibles, rear and side.
- Energy efficient! Get more hot water at a lower operating cost!
- Available on most Rheem gas water heater models.

What size Rheem gas model do you need?

How many are in the family?	
How many bathtubs or showers?*	
Automatic dishwasher? (Mark 1 if yes)	
Washing machine? (Mark 1 if yes)	
TOTAL	

*Refers to standard capacity baths; spa, whirlpool or oversized baths may require a larger sized water heater.

IF TOTAL IS	YOU NEED
4 or less	30-gallon
5-7	40-gallon
8 or more	50-gallon or >**

**Depends on your household water consumption patterns, you may wish to consider a high input 50, 60, 63, 75 or 98-gallon High Efficiency or Heavy-Duty model.



The new degree of comfort™



Residential Gas Water Heaters

RESIDENTIAL TANK-TYPE GAS | Includes New Professional Prestige™, Classic Plus™ & Classic™ Models



PRESTIGE HIGH EFFICIENCY CONDENSING POWER DIRECT VENT

- .82 EF
- Long vent runs up to 60 feet with plastic pipe
- Integrated self-diagnostic system
- Natural gas and LP
- 38 and 48-Gallon capacities
- Up to 40,000 Btu/h
- Enhanced-flow brass drain valve

Limited Warranty*
• Tank and Parts – 6 Years



CLASSIC PLUS INDUCED DRAFT

- .70 EF
- Recovery rate: 61 GPH at a 90° F rise
- Integrated self-diagnostic system
- 29 Gallon capacity with 90-Gallon FHR performance
- 17 3/4 inch diameter
- 60,000 Btu/h, nat. gas only
- Enhanced-flow brass drain valve

Limited Warranty*
• Tank and Parts – 8 Years



CLASSIC PLUS POWERED DAMPER

- .67 - .69 EF
- Recovery rate: 36.4 to 50.5 GPH at a 90° F rise
- Integrated self-diagnostic system
- Energy efficient 24 VAC flue damper
- Meets 40 ng/J NOx requirements
- 38, 40, and 50-Gallon capacities
- Up to 50,000 Btu/h
- Enhanced-flow brass drain valve

Limited Warranty*
• Tank and Parts – 8 Years



CLASSIC PLUS HEAVY DUTY ATMOSPHERIC

- .49 - .58 EF
- Recovery rate: 45.5 to 75.8 GPH at a 90° F rise
- Meets 40 ng/J NOx requirements
- 48, 60, 63, 75 and 98-Gallon capacities
- Up to 75,100 Btu/h
- Enhanced-flow brass drain valve

Limited Warranty*
• Tank and Parts – 8 Years



CLASSIC PLUS POWER DIRECT VENT

- .62 EF
- Recovery rate: 47.5 to 75.8 GPH at a 90° F rise
- Integrated self-diagnostic system
- Long venting options up to 100 ft.
- Meets 40 ng/J NOx requirements
- 50, 60 and 75-Gallon capacities
- Up to 75,100 Btu/h
- Enhanced-flow brass drain valve

Limited Warranty*
• Tank and Parts – 8 Years



CLASSIC PLUS HEAVY DUTY POWER VENT

- .59-.62 EF
- Recovery rate: 50.5 to 75.8 GPH at a 90° F rise, based on model
- Long venting options up to 100 feet
- Integrated self-diagnostic system
- 60 and 75-Gallon capacities
- Up to 75,000 Btu/h
- Enhanced-flow brass drain valve

Limited Warranty*
• Tank and Parts – 8 Years

Residential Tank-Type Gas Continued



CLASSIC PLUS ULTRA LOW NOx POWERED DAMPER

- .68 EF
- Recovery rate: 36.4 GPH at a 90° F rise
- Integrated self-diagnostic system
- Energy efficient 24 VAC flue damper
- Meets 10 ng/J NOx requirements
- 40 and 50-Gallon capacities
- Ultra low NOx 36,000 Btu/h burner
- Enhanced-flow brass drain valve

Limited Warranty*
• Tank and Parts – 8 Years



CLASSIC PLUS ULTRA LOW NOx ATMOSPHERIC

- .56 EF
- Recovery rate: 45.5 GPH at a 90° F rise
- Features the Guardian System
- Meets 10 ng/J NOx requirements
- 60-Gallon capacity
- 45,000 Btu/h
- Enhanced-flow brass drain valve

Limited Warranty*
• Tank and Parts – 8 Years



CLASSIC PLUS HEAVY DUTY ULTRA LOW NOx ATMOSPHERIC

- Recovery rate: 75.8 gallons at 90° F rise
- Integrated self-diagnostic system
- Meets 14 ng/J NOx requirements
- Features flammable detection system
- 75 and 98-Gallon capacities
- 75,100 Btu/h, natural gas only
- Enhanced-flow brass drain valve

Limited Warranty*
• Tank and Parts – 8 Years



CLASSIC ATMOSPHERIC

- .58 - .62 EF
- Recovery rate: 30.3 to 50.5 GPH at a 90° F rise, based on model
- Features the Guardian System
- Meets 40 ng/J NOx requirements
- 29, 30, 38, 40 and 50-Gallon capacities
- Up to 50,000 Btu/h
- Enhanced-flow brass drain valve

Limited Warranty*
• Tank and Parts – 6 Years



CLASSIC POWER VENT

- .67 EF
- Recovery rate: 32.4 to 42.4 GPH at a 90° F rise, based on model
- Integrated self-diagnostic system
- Long venting options up to 100 feet
- Whisper quiet blower
- 40 and 50-Gallon capacities
- Up to 42,000 Btu/h
- Enhanced-flow brass drain valve

Limited Warranty*
• Tank and Parts – 6 Years



CLASSIC POWER DIRECT VENT

- .67 EF
- Recovery rate: 38.4 to 40.4 GPH at a 90° F rise, based on model
- Integrated self-diagnostic system
- Long venting options up to 100 feet
- Whisper quiet blower
- 40 and 50-Gallon capacities
- Up to 40,000 Btu/h
- Enhanced-flow brass drain valve

Limited Warranty*
• Tank and Parts – 6 Years

Residential Tank-Type Gas Continued



CLASSIC DIRECT VENT CO-AXIAL FOR MANUFACTURED HOUSING

- .58-.59 EF
- Recovery rate: 38.4 GPH at a 90° F rise
- Adjustable coaxial vent
- Longer venting options
- 40 and 50-Gallon capacities
- Up to 38,000 Btu/h
- Enhanced-flow brass drain valve

Limited Warranty*
• Tank and Parts – 6 Years



CLASSIC DIRECT VENT (VERTICAL VENTING OPTION)

- .59 EF
- Recovery rate: 30.3 to 36.4 at a 90° F rise, based on model
- Adjustable coaxial vent
- Longer venting options
- 40 and 50-Gallon capacities
- Up to 36,000 Btu/h
- Enhanced-flow brass drain valve

Limited Warranty*
• Tank and Parts – 6 Years



CLASSIC ULTRA LOW NOx

- .58 - .62 EF
- Recovery rate: 30.3 to 40.4 GPH at a 90° F rise, based on model
- Meets 10 ng/J NOx requirements
- Features the Guardian System
- 28, 38, 40, 48 and 50-Gallon capacities
- Up to 45,000 Btu/h
- Enhanced-flow brass drain valve

Limited Warranty*
• Tank and Parts – 6 Years



CLASSIC ULTRA LOW NOx POWER VENT

- .67 EF
- Recovery rate: 36.4 to 38.4 GPH at a 90° F rise, based on model
- Integrated self-diagnostic system
- Long venting options up to 100 feet
- Whisper quiet blower
- 40 and 50-Gallon capacities
- Up to 38,000 Btu/h
- Enhanced-flow brass drain valve

Limited Warranty*
• Tank and Parts – 6 Years



CLASSIC ATMOSPHERIC FOR MANUFACTURED HOUSING

- .58-.61 EF
- Recovery rate: 32.3 to 38.4 GPH at a 90° F rise, based on model
- CSA and HUD certified
- Features the Guardian System
- 30, 40 and 50-Gallon capacities
- Up to 38,000 Btu/h
- Enhanced-flow brass drain valve

Limited Warranty*
• Tank and Parts – 6 Years



CLASSIC DIRECT VENT FOR MANUFACTURED HOUSING

- .58-.61 EF
- Recovery rate: 30.3 to 32.3 GPH at a 90° F rise, based on model
- CSA and HUD certified
- Combustion air comes from outside
- 30, 40 and 50-Gallon capacities
- Up to 32,000 Btu/h
- Enhanced-flow brass drain valve

Limited Warranty*
• Tank and Parts – 6 Years

Residential Tank-Type Gas Continued

TANKLESS GAS



CLASSIC DIRECT VENT CO-AXIAL FOR MANUFACTURED HOUSING

- .59 EF
- Recovery rate: 30.3 to 36.4 GPH at a 90° F rise, based on model
- CSA and HUD certified
- 40 and 50-Gallon capacities
- Up to 38,000 Btu/h
- Enhanced-flow brass drain valve

Limited Warranty*
• Tank and Parts – 6 Years



PRESTIGE HIGH EFFICIENCY CONDENSING

- 94% efficient
- For 2-3 bathroom homes
- Indoor direct vent and outdoor models
- Vents with standard PVC
- SCAQMD 1146.2 compliant
- 11,000 - 199,900 Btu/h max.
- Temperature upgrade kits with temperature range of 85° F to 185° F available for commercial and hydronic applications

Limited Warranty*
• Heat Exchanger – 12 Years Residential; 5 Years Commercial
• Parts – 5 Years
• Labor – 1 Year



MID-EFFICIENCY

- 82% efficient
- For 2-3 bathroom homes
- Indoor direct vent and outdoor models
- SCAQMD 1146.2 compliant
- 11,000 - 199,900 Btu/h max.
- Temperature upgrade kits with temperature range of 85° F to 185° F available for commercial and hydronic applications

Limited Warranty*
• Heat Exchanger – 12 Years Residential; 5 Years Commercial
• Parts – 5 Years
• Labor – 1 Year

The new Rheem Professional water heater product line has exclusive features, new product tiers and professional grade quality. That's Rheem Ingenuity... And then some.

Units meet or exceed ANSI requirements and have been tested according to D.O.E. procedures. Units meet or exceed the energy efficiency requirements of NAECA, ASHRAE standard 90, ICC Code and all state energy efficiency performance criteria.

Energy Factor based on D.O.E. (Department of Energy) test procedures.

*See Residential Warranty Certificate for complete information



In keeping with its policy of continuous progress and product improvement, Rheem reserves the right to make changes without notice.

Rheem Water Heating • 101 Bell Road
Montgomery, Alabama 36117-4305 • 1.800.621.5622



INTEGRATED AIR & WATER

Rheem.com

PRINTED IN U.S.A. 09/13 WP FORM NO. RG-101 Rev. 10