

A photograph of a white marble fireplace with a black glass front, set against a red wall. The fireplace is lit, showing a fire burning. The mantel is decorated with a framed picture, a potted plant, and a bowl. The floor is covered with a patterned rug.

heatilator[®]
The first name in fireplaces

Reveal

b-vent gas fireplace

Reveal b-vent gas fireplace

The Secret Has Been Revealed

- Open-hearth design eliminates the glass to recreate the experience of a woodburning fireplace
- Radiant, clean-face design enables the black metal front to be hidden behind a choice of non-combustible finishing materials for an authentic, traditional look
- Multi-colored stone refractory comes standard in a choice of traditional brick or herringbone patterns
- Three-tiered burner provides full, generous flames using 40,000 Btus per hour for 36" models and 43,000 Btus per hour for 42" models
- Six-log set is realistically detailed and easily assembled
- Limited Lifetime Warranty



Our exclusive, state-of-the-art, IntelliFire ignition system reduces gas consumption and thermogenerator wear by providing a pilot flame only when needed. It also supplies a back-up battery system to run the fireplace during a power outage.



Above: Reveal shown with Bridgeport mantel, marron brown marble and bi-fold doors

Cover: Reveal shown with Sedona flush mantel, Englewood shelf, cast insert panels and hearth, and bi-fold doors

Reveal Options



Glass door-- non-operable



Glass door - operable

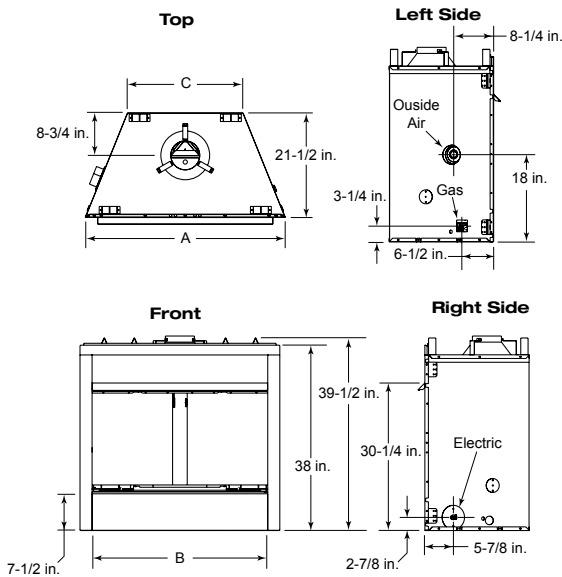
Additional Options Not Pictured

- Remote Controls & Wall Switches
- Thermal Damper
- LP Gas Conversion Kit
- Mantels and Surrounds

Venting

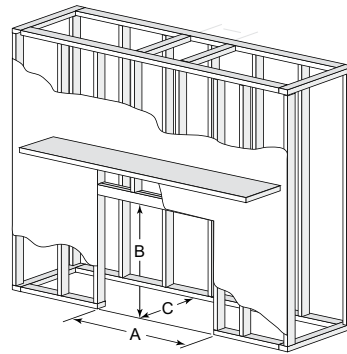
- B-Vent: 6" B-vent pipe

Reveal Dimensions



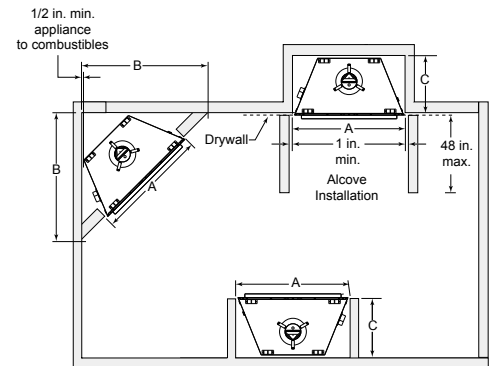
MODEL	A	B	C
RBV4236I	41 in.	36 in.	23-3/4 in.
RBV4842I	47 in.	42 in.	29-3/4 in.

Framing Dimensions



MODEL	A ROUGH OPENING (WIDTH)	B ROUGH OPENING (HEIGHT)	C ROUGH OPENING (DEPTH)
RBV4236I	42 in.	39-3/4 in.	22 in.
RBV4842I	48 in.	39-3/4 in.	22 in.

Clearances



MODEL	A	B	C
RBV4236I	42 in.	48 in.	22 in.
RBV4842I	48 in.	51-1/4 in.	22 in.

The rough framing dimensions shown represent the distance from stud to stud only and do not take into consideration the addition of drywall. Please refer to installation instructions for complete specifications and drawings when installing this product. Go to www.heatilator.com to download.

Available From



A brand of Hearth & Home Technologies Inc.

1915 W. Saunders Street, Mt. Pleasant, IA 52641

Web: heatilator.com

Phone: (800) 927-6841

The information provided in this literature is for planning purposes only and subject to change. Please consult the installation manual for actual installation. Actual product appearance may differ from product images.

*For full warranty details go to heatilator.com.

Limited Lifetime Warranty*

The strongest in the industry, Heatilator provides a limited lifetime warranty on the most important aspects: firebox and heat exchanger.



HTL-1041U-0810