

**24ANB7**  
**Infinity® 17 2-Stage Air Conditioner**  
**with Puron® Refrigerant**  
**2 to 5 Nominal Tons**



## Product Data



INFINITY  SERIES

Carrier's Air Conditioners with Puron® refrigerant provide a collection of features unmatched by any other family of equipment. The 24ANB7 has been designed utilizing Carrier's Puron refrigerant. The environmentally sound refrigerant allows you to make a responsible decision in the protection of the earth's ozone layer.

This product has been designed and manufactured to meet Energy Star® criteria for energy efficiency when matched with appropriate coil components. Refer to the combination ratings in the Product Data for system combinations that meet Energy Star® guidelines.

**NOTE: Ratings contained in this document are subject to change at any time. Always refer to the AHRI directory ([www.ahridirectory.org](http://www.ahridirectory.org)) for the most up-to-date ratings information.**

### INDUSTRY LEADING FEATURES / BENEFITS

#### Efficiency

- 14 - 17.7 SEER / 11.3 - 13.7 EER
- Microtube Technology™ refrigeration system
- Indoor air quality accessories available

#### Sound

- Sound level as low as 67 dBA
- Quiet mount split post compressor grommets
- Forward-swept condenser fan blade
- Compressor sound hood
- Laminated steel compressor mounting plate
- 8 pole PSC ball bearing outdoor condenser fan motor

#### Comfort

- System supports Infinity™ Control or standard 2-stage thermostat controls

#### Reliability

- Puron® refrigerant - environmentally sound, won't deplete the ozone layer and low lifetime service cost.
- Front-seating service valves
- 2-stage scroll compressor
- Internal pressure relief valve
- Internal thermal overload
- Low pressure switch
- High pressure switch
- Filter drier
- Balanced refrigeration system for maximum reliability

#### Controls and Diagnostics

- Infinity™ Control or 2-Stage Thermostat
- 2 control wires to outdoor unit with Infinity Control (serial numbers 0213E and newer)
- Utility Interface Connection
- Enhanced diagnostics capability with Infinity™ Control

#### Durability

WeatherArmor Ultra™ protection package:

- Solid, Durable sheet metal construction
- Steel louver coil guard
- Baked-on, complete outer coverage, powder paint

#### Applications

- Long-line - up to 250 feet (76.2 m) total equivalent length, up to 200 feet (60.96 m) condenser above evaporator, or up to 80 ft. (24.38 m) evaporator above condenser (See Longline Guide for more information.)
- Low ambient cooling (down to 0°F / -17.8°C ) with approved low ambient accessory kits or complete Infinity system.

## MODEL NUMBER NOMENCLATURE

|                |                |              |              |                   |                  |            |               |               |             |              |    |    |
|----------------|----------------|--------------|--------------|-------------------|------------------|------------|---------------|---------------|-------------|--------------|----|----|
| 1              | 2              | 3            | 4            | 5                 | 6                | 7          | 8             | 9             | 10          | 11           | 12 | 13 |
| N              | N              | A            | A            | A/N               | N                | N          | N             | A/N           | A/N         | A/N          | N  | N  |
| 2              | 4              | A            | N            | B                 | 7                | 3          | 6             | A             | 0           | 0            | 3  | 0  |
| Product Series | Product Family | Tier         | Major Series | SEER              | Cooling Capacity | Variations | Open          | Open          | Voltage     | Minor Series |    |    |
| 24=AC          | A=RES AC       | N = Infinity | B=Puron      | 7=17 SEER Nominal |                  | A=Standard | 0=Not Defined | 0=Not Defined | 3=208-230-1 | 0, 1, 2...   |    |    |

24ANB7



Use of the AHRI Certified TM Mark indicates a manufacturer's participation in the program. For verification of certification for individual products, go to [www.ahridirectory.org](http://www.ahridirectory.org).



ISO 9001  
QMI-SAI Global



This product has been designed and manufactured to meet Energy Star® criteria for energy efficiency when matched with appropriate coil components. However, proper refrigerant charge and proper air flow are critical to achieve rated capacity and efficiency. Installation of this product should follow all manufacturing refrigerant charging and air flow instructions. **Failure to confirm proper charge and air flow may reduce energy efficiency and shorten equipment life.**

## STANDARD FEATURES

| FEATURES   | Unit Size – Voltage, Series |       |       |       |
|--|-----------------------------|-------|-------|-------|
|  | 24–31                       | 36–31 | 48–31 | 60–31 |
| Puron Refrigerant  | X                           | X     | X     | X     |
| Maximum SEER Rating*   | 17.0                        | 17.7  | 17.0  | 16.5  |
| 2–Stage Scroll Compressor  | X                           | X     | X     | X     |
| 2 control wires to outdoor unit with Infinity Control (serial numbers 0213E and newer) | X                           | X     | X     | X     |
| Crankcase Heater   | O                           | O     | X     | X     |
| Long line Capability   | X                           | X     | X     | X     |
| Low Ambient Cooling Capability to 0°F (–17.8°C) w/Infinity Control or Approved Kits    | X                           | X     | X     | X     |
| Enhanced Diagnostics w/Infinity Control  | X                           | X     | X     | X     |
| Utility Interface Connection   | X                           | X     | X     | X     |
| Louvered Coil Guard  | X                           | X     | X     | X     |
| Field Installed Filter Drier   | X                           | X     | X     | X     |
| Front Seating Service Valves   | X                           | X     | X     | X     |
| Internal Pressure Relief Valve   | X                           | X     | X     | X     |
| Internal Thermal Overload  | X                           | X     | X     | X     |
| Long Line capability   | X                           | X     | X     | X     |
| Low Pressure Switch  | X                           | X     | X     | X     |
| High Pressure Switch   | X                           | X     | X     | X     |
| Sound Blanket  | X                           | X     | X     | X     |

X = Standard O = Accessory  
\* With approved combinations

# REFRIGERANT PIPING LENGTH LIMITATIONS

## Liquid Line Sizing and Maximum Total Equivalent Lengths† for Cooling Only Systems with Puron® Refrigerant:

The maximum allowable length of a residential split system depends on the liquid line diameter and vertical separation between indoor and outdoor units.

See Table below for liquid line sizing and maximum lengths :

### Maximum Total Equivalent Length Outdoor Unit BELOW Indoor Unit

| Size                 | Liquid Line Connection | Liquid Line Diam. w/TXV | AC with Puron Refrigerant Maximum Total Equivalent Length†: Outdoor unit BELOW Indoor Vertical Separation ft (m) |                |                 |                 |                  |                   |                   |                   |                   |
|----------------------|------------------------|-------------------------|--|----------------|-----------------|-----------------|------------------|-------------------|-------------------|-------------------|-------------------|
|                      |                        |                         | 0-5 (0-1.5)  | 6-10 (1.8-3.0) | 11-20 (3.4-6.1) | 21-30 (6.4-9.1) | 31-40 (9.4-12.2) | 41-50 (12.5-15.2) | 51-60 (15.5-18.3) | 61-70 (18.6-21.3) | 71-80 (21.6-24.4) |
| 024<br>AC with Puron | 3/8                    | 1/4                     | 75   | 75             | 75              | 50              | 50               | --                | --                | --                | --                |
|                      |                        | 5/16                    | 250*   | 250*           | 250*            | 250*            | 250*             | 225*              | 175               | 125               | 100               |
|                      |                        | 3/8                     | 250*   | 250*           | 250*            | 250*            | 250*             | 250*              | 250*              | 250*              | 250*              |
| 036<br>AC with Puron | 3/8                    | 5/16                    | 175  | 150            | 150             | 100             | 100              | 100               | 75                | --                | --                |
|                      |                        | 3/8                     | 250*   | 250*           | 250*            | 250*            | 250*             | 250*              | 250*              | 250*              | 250*              |
| 048<br>AC with Puron | 3/8                    | 3/8                     | 250*   | 250*           | 250*            | 250*            | 250*             | 250*              | 230               | 160               | --                |
| 060<br>AC with Puron | 3/8                    | 3/8                     | 250*   | 250*           | 250*            | 225*            | 190              | 150               | 110               | --                | --                |

\* Maximum actual length not to exceed 200 ft (61 m)

† Total equivalent length accounts for losses due to elbows or fitting. See the Long Line Guideline for details.

-- = outside acceptable range

24ANB7

### Maximum Total Equivalent Length Outdoor Unit ABOVE Indoor Unit

| Size                 | Liquid Line Connection | Liquid Line Diam. w/TXV | AC with Puron Refrigerant Maximum Total Equivalent Length†: Outdoor unit ABOVE Indoor Vertical Separation ft (m) |                  |                   |                    |                     |                     |                     |                     |
|----------------------|------------------------|-------------------------|--|------------------|-------------------|--------------------|---------------------|---------------------|---------------------|---------------------|
|                      |                        |                         | 25 (7.6)   | 26-50 (7.9-15.2) | 51-75 (15.5-22.9) | 76-100 (23.2-30.5) | 101-125 (30.8-38.1) | 126-150 (38.4-45.7) | 151-175 (46.0-53.3) | 176-200 (53.6-61.0) |
| 024<br>AC with Puron | 3/8                    | 1/4                     | 100  | 125              | 175               | 200                | 225*                | 250*                | 250*                | 250*                |
|                      |                        | 5/16                    | 250*   | 250*             | 250*              | 250*               | 250*                | 250*                | 250*                | 250*                |
|                      |                        | 3/8                     | 250*   | 250*             | 250*              | 250*               | 250*                | 250*                | 250*                | 250*                |
| 036<br>AC with Puron | 3/8                    | 5/16                    | 225*   | 250*             | 250*              | 250*               | 250*                | 250*                | 250*                | 250*                |
|                      |                        | 3/8                     | 250*   | 250*             | 250*              | 250*               | 250*                | 250*                | 250*                | 250*                |
| 048<br>AC with Puron | 3/8                    | 3/8                     | 250*   | 250*             | 250*              | 250*               | 250*                | 250*                | 250*                | 250*                |
| 060<br>AC with Puron | 3/8                    | 3/8                     | 250*   | 250*             | 250*              | 250*               | 250*                | 250*                | 250*                | 250*                |

\* Maximum actual length not to exceed 200 ft (61 m)

† Total equivalent length accounts for losses due to elbows or fitting. See the Long Line Guideline for details.

## REFRIGERANT CHARGE ADJUSTMENTS

| Liquid Line Size | Puron Charge oz/ft (g/m)                                       |
|------------------|--|
| 3/8              | 0.60 (17.74)<br>(Factory charge for lineset = 9 oz / 266.16 g) |
| 5/16             | 0.40 (11.83)   |
| 1/4              | 0.27 (7.98)  |

Units are factory charged for 15 ft (4.6 m) of 3/8" liquid line. The factory charge for 3/8" lineset 9 oz.(266.16 g). When using other length or diameter liquid lines, charge adjustments are required per the chart above.

### Charging Formula:

$$[(\text{Lineset oz/ft} \times \text{total length}) - (\text{factory charge for lineset})] = \text{charge adjustment}$$

**Example 1:** System has 15 ft of line set using existing 1/4" liquid line. What charge adjustment is required?

$$\text{Formula: } (.27 \text{ oz/ft} \times 15\text{ft}) - (9 \text{ oz}) = (-4.95) \text{ oz.}$$

Net result is to remove 4.95 oz of refrigerant from the system

**Example 2:** System has 45 ft of existing 5/16" liquid line. What is the charge adjustment?

$$\text{Formula: } (.40 \text{ oz/ft.} \times 45\text{ft}) - (9 \text{ oz.}) = 9 \text{ oz.}$$

Net result is to add 9 oz of refrigerant to the system

# LONG LINE APPLICATIONS

An application is considered Long Line, when the refrigerant level in the system requires the use of accessories to maintain acceptable refrigerant management for systems reliability. See Accessory Usage Guideline table for required accessories. Defining a system as long line depends on the liquid line diameter, actual length of the tubing, and vertical separation between the indoor and outdoor units.

For Air Conditioner systems, the chart below shows when an application is considered Long Line.

## AC WITH PURON® REFRIGERANT LONG LINE DESCRIPTION ft (m) Beyond these lengths, long line accessories are required

| Liquid Line Size | Units On Same Level                          | Outdoor Below Indoor                         | Outdoor Above Indoor |
|------------------|--|--|----------------------|
| 1/4              | No accessories needed within allowed lengths | No accessories needed within allowed lengths | 175 (53.3)           |
| 5/16             | 120 (36.6)                                   | 50 (15.2) vertical or 120 (36.6) total       | 120 (36.6)           |
| 3/8              | 80 (24.4)                                    | 35 (10.7) vertical or 80 (24.4) total        | 80 (24.4)            |

Note: See Long Line Guideline for details

# VAPOR LINE SIZING AND COOLING CAPACITY LOSS

Acceptable vapor line diameters provide adequate oil return to the compressor while avoiding excessive capacity loss. The suction line diameters shown in the chart below are acceptable for AC systems with Puron refrigerant:

## Vapor Line Sizing and Cooling Capacity Losses — Puron® Refrigerant 2-Stage Air Conditioner Applications

| Unit Nominal Size (Btuh)      | Maximum Liquid Line Diameters (In. OD) | Vapor Line Diameters (In.) OD | Cooling Capacity Loss (%)<br>Total Equivalent Line Length ft. (m) |                      |                       |                        |                        |                        |                        |                        |                        |
|-------------------------------|--|-------------------------------|---|----------------------|-----------------------|------------------------|------------------------|------------------------|------------------------|------------------------|------------------------|
|                               |  |                               | 26-50<br>(7.9-15.2)   | 51-80<br>(15.5-24.4) | 81-100<br>(24.7-30.5) | 101-125<br>(30.8-38.1) | 126-150<br>(38.4-45.7) | 151-175<br>(46.0-50.3) | 176-200<br>(53.6-60.0) | 201-225<br>(61.3-68.6) | 226-250<br>(68.9-76.2) |
| 024<br>2-Stage<br>Puron<br>AC | 3/8                                    | 5/8                           | 0   | 1                    | 1                     | 2                      | 3                      | 3                      | 4                      | 4                      | 5                      |
|                               |  | 3/4                           | 0   | 0                    | 0                     | 0                      | 1                      | 1                      | 1                      | 1                      | 1                      |
| 036<br>2-Stage<br>Puron<br>AC | 3/8                                    | 5/8                           | 1   | 2                    | 4                     | 5                      | 6                      | 7                      | 9                      | 10                     | 11                     |
|                               |  | 3/4                           | 0   | 0                    | 1                     | 1                      | 2                      | 2                      | 3                      | 3                      | 4                      |
|                               |  | 7/8                           | 0   | 0                    | 0                     | 0                      | 1                      | 1                      | 1                      | 1                      | 2                      |
| 048<br>2-Stage<br>Puron<br>AC | 3/8                                    | 3/4                           | 1   | 2                    | 2                     | 3                      | 4                      | 5                      | 6                      | 7                      | 7                      |
|                               |  | 7/8                           | 0   | 1                    | 1                     | 2                      | 2                      | 2                      | 3                      | 3                      | 3                      |
|                               |  | 1-1/8                         | 0   | 0                    | —                     | —                      | —                      | —                      | —                      | —                      | —                      |
| 060<br>2-Stage<br>Puron<br>AC | 3/8                                    | 3/4                           | 1   | 2                    | 4                     | 5                      | 6                      | 7                      | 9                      | 10                     | 11                     |
|                               |  | 7/8                           | 0   | 1                    | 2                     | 2                      | 3                      | 4                      | 4                      | 5                      | 5                      |
|                               |  | 1-1/8                         | 0   | 0                    | 0                     | 1                      | 1                      | 1                      | 1                      | 1                      | 1                      |

Applications in this area may be long line and may have height restrictions. See the Residential Piping and Long Line Guideline.

— Applications in this area are not recommended due to insufficient oil return

# PHYSICAL DATA

| UNIT SIZE - VOLTAGE, SERIES | 24-31                                      | 36-31       | 48-31        | 60-31        |
|-----------------------------|--|-------------|--------------|--------------|
| Operating Weight lb (kg)    | 203 (92.1)                                 | 236 (107.0) | 310 (140.6)  | 311 (141.1)  |
| Shipping Weight lb (kg)     | 242 (109.8)                                | 275 (124.7) | 352 (159.7)  | 353 (160.1)  |
| Compressor Type             | Ultratech 2-Stage Scroll                   |             |              |              |
| REFRIGERANT                 | Puron® (R-410A)                            |             |              |              |
| Control                     | TXV (Puron Hard Shutoff)                   |             |              |              |
| Charge lb (kg)              | 6.64 (3.01)                                | 9.26 (4.20) | 12.94 (5.87) | 12.70 (5.76) |
| COND FAN                    | Forward Swept Propeller Type, Direct Drive |             |              |              |
| Air Discharge               | Vertical                                   |             |              |              |
| Air Qty (CFM)               | 2481                                       | 3068        | 4700         | 4700         |
| Motor HP                    | 1/12                                       | 1/10        | 1/4          | 1/4          |
| Motor RPM                   | 800  | 825         | 825          | 825          |
| COND COIL                   |  |             |              |              |
| Face Area (Sq ft)           | 19.38                                      | 19.38       | 25.12        | 25.12        |
| Fins per In.                | 25   | 20          | 20           | 20           |
| Rows                        | 1  | 2           | 2            | 2            |
| Circuits                    | 5  | 7           | 7            | 7            |
| VALVE CONNECT. (In. ID)     |  |             |              |              |
| Vapor                       | 3/4  | 7/8         | 7/8          | 7/8          |
| Liquid                      |  |             | 3/8          |              |
| REFRIGERANT TUBES (In. OD)  |  |             |              |              |
| Rated Vapor*                | 3/4  | 7/8         | 1-1/8        | 1-1/8        |
| Liquid                      |  |             | 3/8          |              |

\*Units are rated with 25 ft (7.6 m) of lineset length. See Vapor Line Sizing and Cooling Capacity Loss table when using other sizes and lengths of lineset.

# ELECTRICAL DATA

| Unit Size – Voltage, Series | V/PH      | OPER VOLTS* |     | COMPR |      | FAN | MCA  | MIN WIRE SIZE† | MIN WIRE SIZE† | MAX LENGTH ft. (m)‡ | MAX LENGTH ft. (m)‡ | MAX FUSE** or CKT BRK AMPS |
|-----------------------------|-----------|-------------|-----|-------|------|-----|------|----------------|----------------|---------------------|---------------------|----------------------------|
|                             |           | MIN         | MAX | LRA   | RLA  |     |      | FLA            | 60° C          | 75° C               | 60° C               |                            |
| 24–31                       | 208–230–1 | 197         | 253 | 58.3  | 11.1 | 0.6 | 14.5 | 14             | 14             | 54 (16.6)           | 52 (15.7)           | 20                         |
| 36–31                       |           |             |     | 83.0  | 15.3 | 0.7 | 19.8 | 12             | 12             | 63 (19.2)           | 60 (18.3)           | 35                         |
| 48–31                       |           |             |     | 104.0 | 21.2 | 1.3 | 27.8 | 10             | 10             | 72 (21.9)           | 68 (20.8)           | 40                         |
| 60–31                       |           |             |     | 152.9 | 28.8 | 1.3 | 37.3 | 8              | 8              | 83 (25.4)           | 79 (24.2)           | 60                         |

\* Permissible limits of the voltage range at which the unit will operate satisfactorily

† If wire is applied at ambient greater than 30°C, consult table 310–16 of the NEC (NFPA 70). The ampacity of non-metallic-sheathed cable (NM), trade name ROMEX, shall be that of 60°C conditions, per the NEC (NFPA 70) Article 336–26. If other than uncoated (no-plated), 60 or 75°C insulation, copper wire (solid wire for 10 AWG or smaller, stranded wire for larger than 10 AWG) is used, consult applicable tables of the NEC (NFPA 70).

‡ Length shown is as measured one way along wire path between unit and service panel for voltage drop not to exceed 2%.

\*\* Time-Delay fuse.

- FLA – Full Load Amps
- LRA – Locked Rotor Amps
- MCA – Minimum Circuit Amps
- RLA – Rated Load Amps

**NOTE:** Control circuit is 24–V on all units and requires external power source. Copper wire must be used from service disconnect to unit. All motors/compressors contain internal overload protection.

Complies with 2010 requirements of ASHRAE Standards 90.1

## A-WEIGHTED SOUND POWER (dBA)

| Unit Size – Voltage, Series | Standard Rating (dBA) | Typical Octave Band Spectrum (dBA, without tone adjustment) |      |      |      |      |      |      |
|-----------------------------|-----------------------|---|------|------|------|------|------|------|
|                             |                       | 125   | 250  | 500  | 1000 | 2000 | 4000 | 8000 |
| 24–31                       | 71 – High Stage       | 51.0  | 55.5 | 61.5 | 66.0 | 59.0 | 54.5 | 51.0 |
|                             | 69 – Low Stage        | 49.5  | 55.5 | 61.0 | 64.0 | 59.5 | 54.5 | 49.0 |
| 36–31                       | 69 – High Stage       | 58.5  | 57.5 | 61.5 | 63.5 | 57.5 | 53.5 | 50.5 |
|                             | 67 – Low Stage        | 57.0  | 58.0 | 62.0 | 61.5 | 57.5 | 53.5 | 49.0 |
| 48–31                       | 70 – High Stage       | 55.0  | 62.0 | 63.5 | 65.0 | 59.0 | 55.5 | 48.5 |
|                             | 69 – Low Stage        | 54.5  | 61.5 | 63.5 | 63.5 | 59.0 | 56.0 | 49.5 |
| 60–31                       | 72 – High Stage       | 52.0  | 63.5 | 65.5 | 66.0 | 60.0 | 58.5 | 52.5 |
|                             | 71 – Low Stage        | 53.5  | 63.5 | 65.5 | 65.0 | 60.5 | 58.5 | 54.5 |

**NOTE:** Tested in accordance with AHRI Standard 270–08. (Not listed with AHRI).

## CHARGING SUBCOOLING (TXV-TYPE EXPANSION DEVICE)

| UNIT SIZE – VOLTAGE, SERIES | REQUIRED SUBCOOLING °F (°C) |
|-----------------------------|-----------------------------|
| 24–31                       | 10 (5.6)                    |
| 36–31                       | 14 (7.8)                    |
| 48–31                       | 13 (7.2)                    |
| 60–31                       | 14 (7.8)                    |

## ACCESSORY CONTROLS

| PART NUMBER                  | DESCRIPTION   |
|------------------------------|---|
| SYSTXCCITN01                 | Infinity Touch Control (non-Wi-Fi)  |
| SYSTXCCITW01                 | Infinity Touch Control with Wi-Fi & Wireless Access Point   |
| SYSTXCCUID01–V               | Infinity Control Deluxe 7–Day Programmable (4–Wire User Interface w/ multiple functionality)                                |
| SYSTXCCUIZ01–V               | Infinity Control Deluxe Zoning 7–Day Programmable (Wall–mounted control for a multi–zone system. w/ multiple functionality) |
| SYSTXCCUID01–B               | Infinity Control Deluxe 7–Day Programmable (Wall–mounted system control.)   |
| SYSTXCCUIZ01–B               | Infinity Control Deluxe Zoning 7–Day Programmable (Wall–mounted control for a multi–zone system.)                           |
| SYSTXCC4ZC01                 | Infinity 4–Zone Damper Control Module (Wall–mounted control for a four–zone system.)  |
| SYSTXCCSMS01                 | Infinity Smart Sensor (Optional wall control used to monitor temperature and/or fan control in an individual zone.)         |
| SYSTXCCRRS01                 | Infinity Remote Room Sensor (Monitors temperature in an individual zone.)   |
| SYSTXCCRCT01 or SYSTXCCRWF01 | Infinity System Remote Access Module (Hardware for wireless access and control via internet.)                               |
| SYSTXCCNIM01                 | Infinity Network Interface Module (Connects Heat Recovery and Energy Recovery Ventilators on non-zoning applications.)      |

## ACCESSORIES

| ORDER NUMBER  | DESCRIPTION          | 24–31 | 36–31 | 48–31 | 60–31 |
|---------------|----------------------|-------|-------|-------|-------|
| KAACH2401AAA  | CRANKCASE HEATER     | X     | X     | S     | S     |
| KSAHS2501AAA* | HARD START KIT       | X     | X     |       |       |
| KSAHS2801AAA* | HARD START KIT       |       |       | X     | X     |
| KAALS0201LLS  | SOLENOID VALVE       | X     | X     | X     | X     |
| KSALA0301410  | LOW AMBIENT PSW      | X     | X     | X     | X     |
| KAAFT0101AAA  | FREEZE THERMOSTAT    | X     | X     | X     | X     |
| KAAWS0101AAA  | WINTER START CONTROL | X     | X     | X     | X     |
| KSASF0101AAA  | SUPPORT FEET         | X     | X     | X     | X     |

x = Accessory S = Standard

\* Not backward compatible to previous series.

# ACCESSORY USAGE GUIDELINE

| Accessory                                       | Required for Low Ambient Cooling Applications Utilizing 2-Stage Thermostat on 17 SEER Models Only (Below 55° F / 12.8° C) | Required for Low Ambient Cooling Applications Utilizing UI (Below 55° F / 12.8° C) | Required for Long Line Applications*             | Required for Sea Coast Applications (within 2 miles/3.2 km) |
|---|---|--|--|---|
| Compressor Start Assist Capacitor and Relay     | No  | No   | No   | No  |
| Crankcase Heater                                | Yes<br>(standard on some units)   | Yes<br>(standard on some units)  | Yes<br>(standard on some units)                  | No  |
| Evaporator Freeze Thermostat                    | Yes (kit required)  | Standard with Infinity Control (no kit required)                                   | No   | No  |
| Liquid Line Solenoid Valve                      | No  | No   | See Residential Piping and Long Line Guideline   | No  |
| Low-Ambient Pressure Switch                     | Yes (kit required)  | Standard with Infinity Control (no kit required)                                   | No   | No  |
| Puron Refrigerant Balance Port Hard Shutoff TXV | Yes<br>(standard w/factory approved indoor unit)  | Yes<br>(standard w/factory approved indoor unit)                                   | Yes<br>(standard w/factory approved indoor unit) | Yes<br>(standard w/factory approved indoor unit)            |
| Support Feet                                    | Recommended   | Recommended  | No   | Recommended   |
| Winter Start Control                            | Yes (kit required)  | Standard with Infinity Control (no kit required)                                   | No   | No  |

\* For tubing set lengths between 80 and 200 ft. (24.38 and 60.96 m) horizontal or 35 ft. (10.7 m) vertical differential (total equivalent length), refer to the Residential Piping and Long Line Guideline.

## Accessory Description and Usage (Listed Alphabetically)

### 1. Compressor Start Assist - Capacitor and Relay

Start capacitor and relay gives a "hard" boost to compressor motor at each start up.

Usage Guideline:

Not required on this unit since compressor always starts unloaded.

Available if required by local codes.

### 2. Crankcase Heater

An electric resistance heater which mounts to the base of the compressor to keep the lubricant warm during off cycles. Improves compressor lubrication on restart and minimizes the chance of liquid slugging.

Usage Guideline:

Required in low ambient cooling applications.

Required in long line applications.

Suggested in all commercial applications.

### 3. Evaporator Freeze Thermostat

An SPST temperature-actuated switch that stops unit operation when evaporator reaches freeze-up conditions.

Usage Guideline:

Required when low ambient kit has been added.

### 4. Low-Ambient Pressure Switch

A long life pressure switch which is mounted to outdoor unit service valve. It is designed to cycle the outdoor fan motor in order to maintain head pressure within normal operating limits. The control will maintain working head pressure at low-ambient temperatures down to 0°F (-17.8°C) when properly installed.

Usage Guideline:

A Low-Ambient Pressure Switch must be used when cooling operation is used at outdoor temperatures below 55°F (12.8°C).

### 5. Support Feet

Four stick-on plastic feet that raise the unit 4 in. (101.6 mm) above the mounting pad. This allows sand, dirt, and other debris to be flushed from the unit base, minimizing corrosion.

Usage Guideline:

Suggested in the following applications:

Coastal installations.

Windy areas or where debris is normally circulating.

Rooftop installations.

For improved sound ratings.

### 6. Thermostatic Expansion Valve (TXV)

A modulating flow-control valve which meters refrigerant liquid flow rate into the evaporator in response to the superheat of the refrigerant gas leaving the evaporator.

Kit includes valve, adapter tubes, and external equalizer tube. Hard shut off types are available.

**NOTE:** When using a hard shut off TXV with single phase reciprocating compressors, a Compressor Start Assist Capacitor and Relay is required.

Usage Guideline:

Required to achieve AHRI ratings in certain equipment combinations. Refer to combination ratings.

Hard shut off TXV or LLS required in air conditioner long line applications.

### 7. Winter Start Control

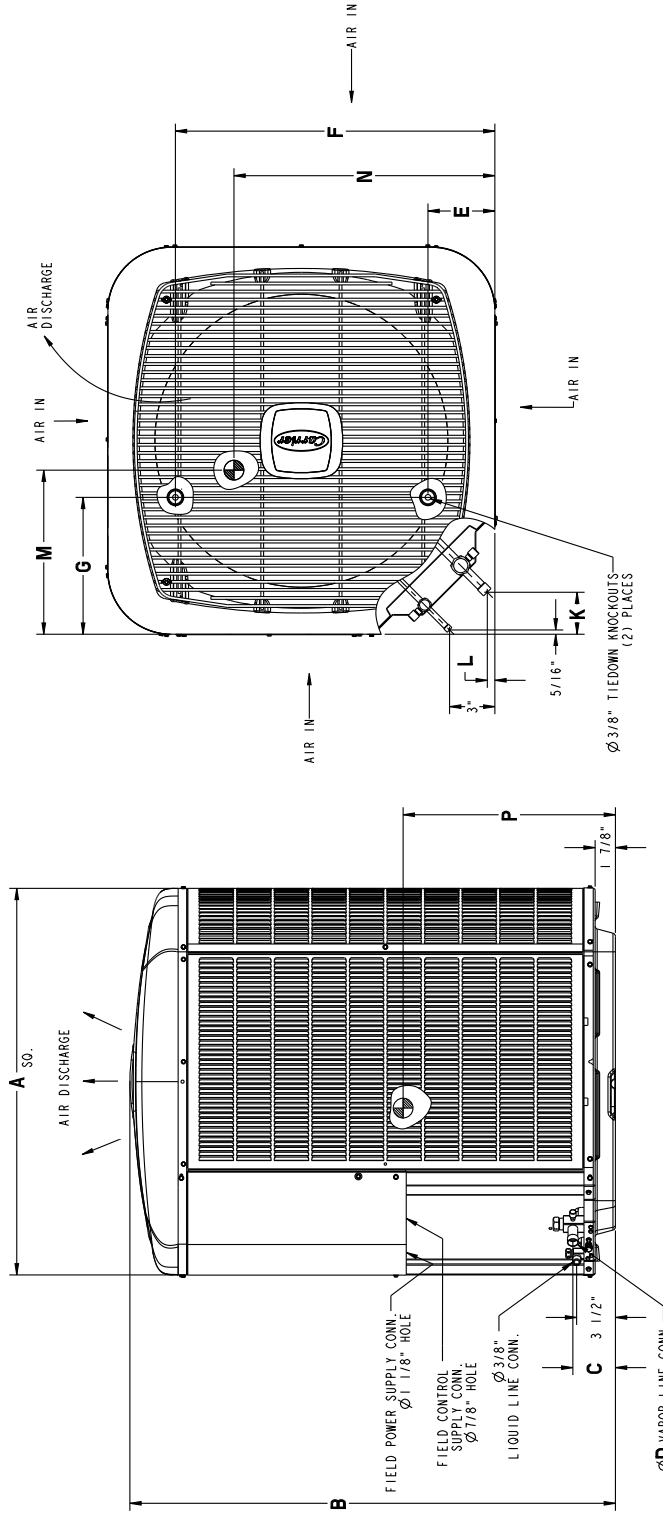
This control is designed to alleviate nuisance opening of the low-pressure switch by bypassing it for the first 3 minutes of operation.

# DIMENSIONS - ENGLISH

| UNIT      | SERIES | ELECTRICAL CHARACTERISTICS | A        | B       | C      | D    | E       | F         | G      | K        | L    | M       | N       | P       | OPERATING WEIGHT (lbs) | SHIPPING WEIGHT (lbs) | SHIPPING DIMENSIONS (L x W x H) |
|-----------|--------|----------------------------|----------|---------|--------|------|---------|-----------|--------|----------|------|---------|---------|---------|------------------------|-----------------------|---------------------------------|
| 24ANB724A | I      | X 0 0 0                    | 31 3/16" | 36 3/8" | 3 3/4" | 3/4" | 6 9/16" | 24 11/16" | 9 1/8" | 2 13/16" | 1/2" | 15 7/8" | 16 1/2" | 17 3/4" | 203                    | 242                   | 33 5/16" X 33 5/16" X 42 3/4"   |
| 24ANB736A | I      | X 0 0 0                    | 31 3/16" | 36 3/8" | 3 7/8" | 7/8" | 6 9/16" | 24 11/16" | 9 1/8" | 2 15/16" | 5/8" | 16"     | 15 1/2" | 17 1/2" | 236                    | 275                   | 33 5/16" X 33 5/16" X 42 3/4"   |
| 24ANB748A | I      | X 0 0 0                    | 35"      | 40 5/8" | 3 7/8" | 7/8" | 6 9/16" | 28 7/16"  | 9 1/8" | 2 15/16" | 5/8" | 17 1/4" | 17 1/4" | 18 1/2" | 310                    | 352                   | 37 1/8" X 37 1/8" X 46 1/8"     |
| 24ANB760A | I      | X 0 0 0                    | 35"      | 40 5/8" | 3 7/8" | 7/8" | 6 9/16" | 28 7/16"  | 9 1/8" | 2 15/16" | 5/8" | 16 1/2" | 16 1/4" | 17 1/2" | 311                    | 353                   | 37 1/8" X 37 1/8" X 46 1/8"     |

X = YES  
O = NO

|             |              |          |
|-------------|--------------|----------|
| 208-230-160 | 208-230-3-60 | 460-3-60 |
|-------------|--------------|----------|



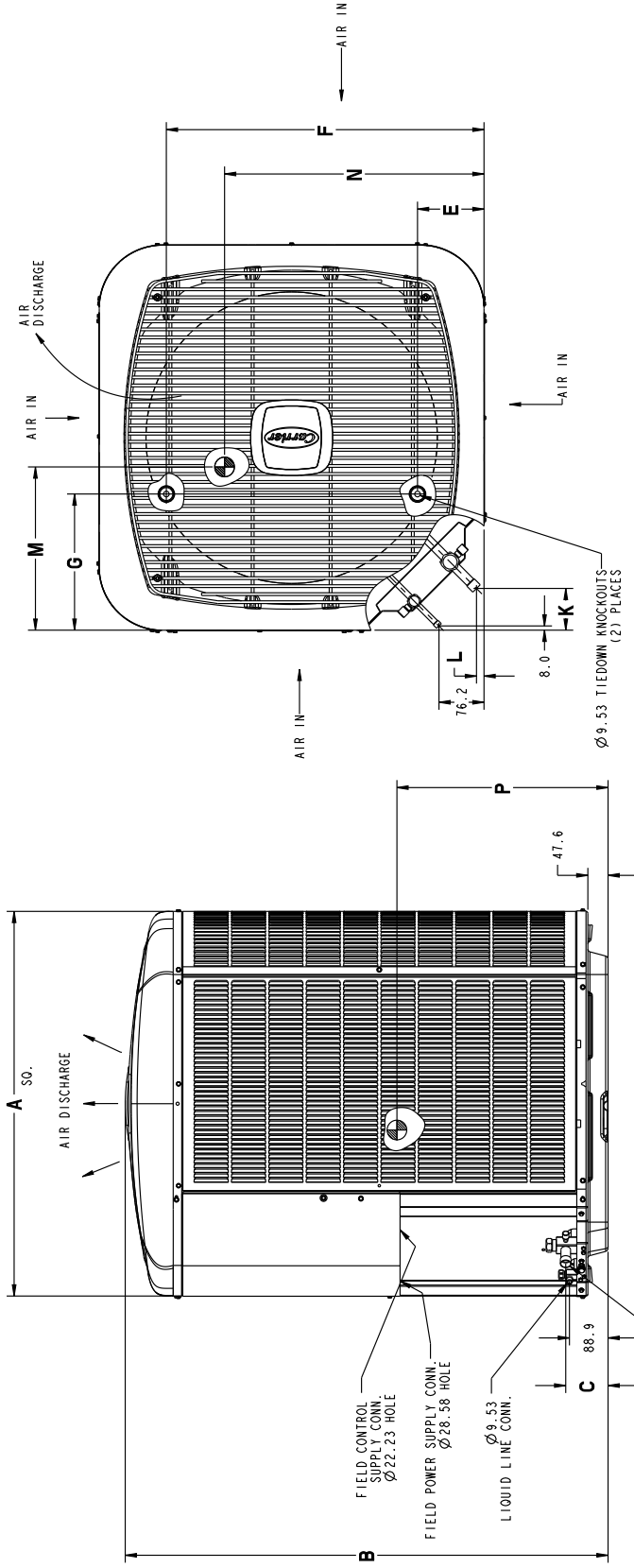
| UNIT SIZE | MINIMUM MOUNTING PAD DIMENSIONS |
|-----------|---------------------------------|
| 24, 36    | 31 1/2" X 31 1/2"               |
| 48, 60    | 35" X 35"                       |

**DIMENSIONS - SI**

| UNIT      | SERIES | ELECTRICAL CHARACTERISTICS | A     | B      | C    | D    | E     | F     | G     | K    | L    | M     | N     | P     | OPERATING WEIGHT (Kgs) | SHIPPING WEIGHT (Kgs) | SHIPPING DIMENSIONS (L x W x H) |
|-----------|--------|----------------------------|-------|--------|------|------|-------|-------|-------|------|------|-------|-------|-------|------------------------|-----------------------|---------------------------------|
| 24ANB724A | I      | X 0 0 0 0                  | 792.5 | 923.9  | 95.6 | 19.1 | 166.1 | 626.3 | 231.3 | 70.9 | 12.8 | 403.2 | 419.1 | 450.9 | 92.1                   | 109.8                 | 846.4 X 846.4 X 1085.8          |
| 24ANB736A | I      | X 0 0 0 0                  | 792.5 | 923.9  | 97.9 | 22.2 | 166.1 | 626.3 | 231.3 | 74.5 | 16.3 | 406.4 | 393.7 | 444.5 | 107.0                  | 124.7                 | 846.4 X 846.4 X 1085.8          |
| 24ANB748A | I      | X 0 0 0 0                  | 889.0 | 1032.5 | 97.9 | 22.2 | 166.1 | 722.8 | 231.3 | 74.5 | 16.3 | 438.2 | 438.2 | 469.9 | 140.6                  | 159.7                 | 942.9 X 942.9 X 1172.2          |
| 24ANB760A | I      | X 0 0 0 0                  | 889.0 | 1032.5 | 97.9 | 22.2 | 166.1 | 722.8 | 231.3 | 74.5 | 16.3 | 419.1 | 412.8 | 444.5 | 141.1                  | 160.1                 | 942.9 X 942.9 X 1172.2          |

X = YES  
O = NO

|             |         |              |          |
|-------------|---------|--------------|----------|
| 208-230-160 | 230-160 | 208/230-3-60 | 460-3-60 |
|-------------|---------|--------------|----------|

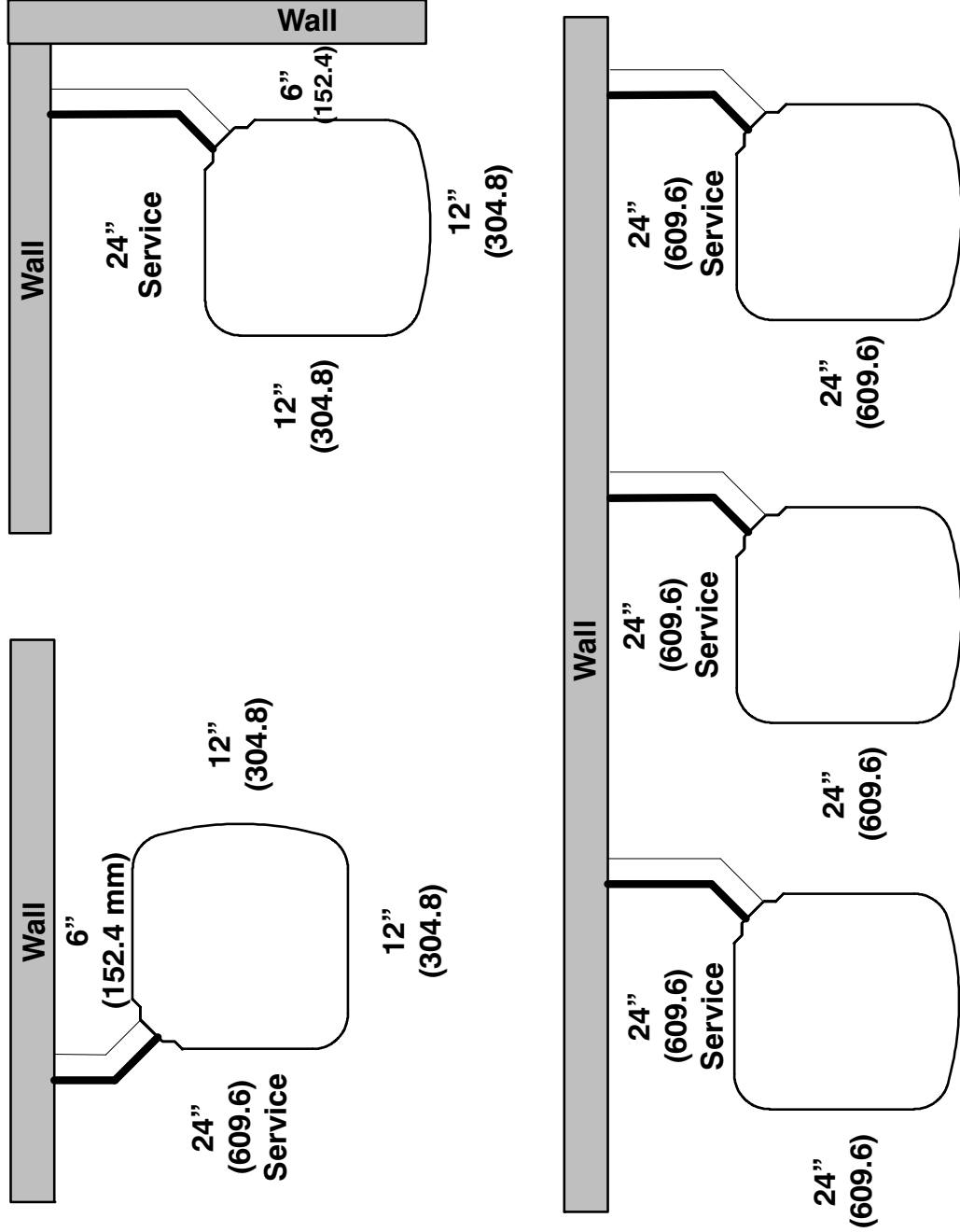


| UNIT SIZE | MINIMUM MOUNTING PAD DIMENSIONS |
|-----------|---------------------------------|
| 24, 36    | 800.1 X 800.1                   |
| 48, 60    | 889.0 X 889.0                   |



# CLEARANCES

Clearances (various examples)



**Note:** Numbers in ( ) = mm

**IMPORTANT:** When installing multiple units in an alcove, roof well, or partially enclosed area, ensure there is adequate ventilation to prevent re-circulation of discharge air.

# TESTED AHRI COMBINATION RATINGS

**NOTE:** Ratings contained in this document are subject to change at any time.

For AHRI ratings certificates, please refer to the AHRI directory [www.ahridirectory.org](http://www.ahridirectory.org)

Additional ratings and system combinations can be accessed via the Carrier database at: [www.MyCarrierRatings.com](http://www.MyCarrierRatings.com)

For performance data at specific application &/or design conditions with various indoor unit combinations, the equipment performance calculator can be accessed at : <http://rpmob.wrightsoft.com/>

| Model Number  | Indoor Coil Model Number | AHRI STANDARD RATINGS |        |      |      |        |      | FURNACE MODEL   |
|---------------|--------------------------|-----------------------|--------|------|------|--------|------|-----------------|
|               |                          | COOLING               |        |      |      |        |      |                 |
|               |                          | CAPACITY              |        | SEER | EER  | ID CFM |      |                 |
|               |                          | HIGH                  | LOW    |      |      | HIGH   | LOW  |                 |
| 24ANB724A**31 | CNPV*3117A**             | 24,000                | 21,600 | 17.0 | 13.0 | 835    | 670  | 58CV(A,X)090-16 |
| 24ANB736A**31 | CNPV*4821A**             | 36,000                | 29,400 | 17.0 | 13.0 | 1005   | 835  | 58CV(A,X)090-16 |
| 24ANB748A**31 | CNPV*6124A**             | 48,000                | 40,000 | 17.0 | 13.0 | 1355   | 1010 | 58CV(A,X)135-22 |
| 24ANB760A**31 | CNPV*6124A**             | 58,000                | 47,000 | 16.5 | 13.0 | 1685   | 1355 | 58CV(A,X)135-22 |

**AHRI** — Air Conditioning, Heating & Refrigeration Institute

**EER** — Energy Efficiency Ratio — 80°F (26.6°C) indoor db/67°F (19.4°C) indoor wb & 95°F (35°C) outdoor wb.

**SEER** — Seasonal Energy Efficiency Ratio

**TDR** — Time–Delay Relay. In most cases, only 1 method should be used to achieve TDR function. Using more than 1 method in a system may cause degradation in performance. Use either the accessory Time–Delay Relay KAATD0101TDR or a furnace equipped with TDR. Most Carrier furnaces are equipped with TDR.

**NOTES:**

1. Ratings are net values reflecting the effects of circulating fan motor heat. Supplemental electric heat is not included.
2. Tested outdoor/indoor combinations have been tested in accordance with DOE test procedures for central air conditioners. Ratings for other combinations are determined under DOE computer simulation procedures.
3. Determine actual CFM values obtainable for your system by referring to fan performance data in fan coil or furnace coil literature.
4. Do not apply with capillary tube coils as performance and reliability are affected.

24ANB7

# DETAILED COOLING CAPACITIES#

| EVAPORATOR AIR   |                  | CONDENSER ENTERING AIR TEMPERATURES ° F (° C) |       |                 |                |       |                 |                |       |                 |                |       |                 |                |       |                 |                |       |                 |
|--|------------------|---|-------|-----------------|----------------|-------|-----------------|----------------|-------|-----------------|----------------|-------|-----------------|----------------|-------|-----------------|----------------|-------|-----------------|
| CFM  | EWB<br>° F (° C) | 75 (23.9)                                     |       |                 | 85 (29.4)      |       |                 | 95 (35)        |       |                 | 105 (40.6)     |       |                 | 115 (46.1)     |       |                 | 125 (51.7)     |       |                 |
|  |                  | Capacity MBTuh                                |       | Total Sys. KW** | Capacity MBTuh |       | Total Sys. KW** | Capacity MBTuh |       | Total Sys. KW** | Capacity MBTuh |       | Total Sys. KW** | Capacity MBTuh |       | Total Sys. KW** | Capacity MBTuh |       | Total Sys. KW** |
|  |                  | Total   | Sens† | Total           | Sens†          | Total | Sens†           | Total          | Sens† | Total           | Sens†          | Total | Sens†           | Total          | Sens† | Total           | Sens†          | Total |                 |
| <b>24ANB724A**31 Outdoor Section With CNPV*317A**-58CV(A)X060-16 Indoor Section - High</b> |                  |   |       |                 |                |       |                 |                |       |                 |                |       |                 |                |       |                 |                |       |                 |
|  | 57 (13.9)        | 24.35   | 24.35 | 1.59            | 21.95          | 19.59 | 19.59           | 1.78           | 17.29 | 17.29           | 1.90           | 15.06 | 15.06           | 2.03           | 12.92 | 12.92           | 2.18           |       |                 |
|  | 62 (16.7)        | 25.97   | 21.39 | 1.60            | 23.22          | 20.53 | 17.42           | 1.79           | 17.94 | 15.51           | 1.90           | 15.45 | 13.65           | 2.03           | 13.09 | 11.86           | 2.18           |       |                 |
| <b>600</b>   | 63 (17.2)††      | 26.50   | 17.74 | 1.60            | 23.69          | 16.00 | 12.69           | 1.79           | 18.29 | 12.65           | 1.91           | 15.45 | 11.66           | 2.03           | 13.32 | 9.54            | 2.18           |       |                 |
|  | 67 (19.4)        | 28.68   | 18.42 | 1.61            | 25.64          | 16.63 | 14.88           | 1.80           | 19.82 | 13.18           | 1.92           | 17.07 | 11.54           | 2.04           | 14.47 | 9.98            | 2.19           |       |                 |
|  | 72 (22.2)        | 31.66   | 15.36 | 1.63            | 28.31          | 13.79 | 12.27           | 1.82           | 21.89 | 10.80           | 1.93           | 18.87 | 9.39            | 2.06           | 16.01 | 8.05            | 2.21           |       |                 |
|  | 57 (13.9)        | 25.14   | 25.14 | 1.60            | 22.64          | 20.19 | 20.19           | 1.80           | 17.81 | 17.81           | 1.91           | 15.50 | 15.50           | 2.04           | 13.29 | 13.29           | 2.18           |       |                 |
|  | 62 (16.7)        | 26.46   | 22.38 | 1.61            | 23.65          | 20.29 | 18.25           | 1.80           | 18.25 | 16.26           | 1.91           | 15.71 | 14.32           | 2.04           | 13.33 | 13.26           | 2.19           |       |                 |
| <b>650</b>   | 63 (17.2)††      | 26.98   | 18.42 | 1.61            | 24.11          | 16.62 | 14.87           | 1.80           | 18.57 | 13.16           | 1.92           | 15.98 | 11.52           | 2.04           | 13.51 | 9.95            | 2.19           |       |                 |
|  | 67 (19.4)        | 29.19   | 19.14 | 1.63            | 26.08          | 17.29 | 15.48           | 1.81           | 20.12 | 13.72           | 1.93           | 17.32 | 12.03           | 2.05           | 14.66 | 10.41           | 2.20           |       |                 |
|  | 72 (22.2)        | 32.19   | 15.83 | 1.64            | 28.75          | 14.22 | 12.65           | 1.83           | 22.20 | 11.14           | 1.94           | 19.12 | 9.70            | 2.07           | 16.20 | 8.32            | 2.21           |       |                 |
|  | 57 (13.9)        | 25.85   | 25.85 | 1.61            | 23.27          | 20.74 | 20.74           | 1.81           | 18.28 | 18.28           | 1.92           | 15.90 | 15.90           | 2.05           | 13.62 | 13.62           | 2.19           |       |                 |
|  | 62 (16.7)        | 26.90   | 23.34 | 1.62            | 24.03          | 21.18 | 19.06           | 1.81           | 18.53 | 16.98           | 1.92           | 15.97 | 15.81           | 2.05           | 13.65 | 13.65           | 2.20           |       |                 |
| <b>700</b>   | 63 (17.2)††      | 27.40   | 19.08 | 1.62            | 24.46          | 17.23 | 15.42           | 1.81           | 18.83 | 13.66           | 1.92           | 16.18 | 11.97           | 2.05           | 13.67 | 10.34           | 2.20           |       |                 |
|  | 67 (19.4)        | 29.63   | 19.84 | 1.64            | 26.45          | 17.93 | 16.07           | 1.82           | 20.38 | 14.26           | 1.93           | 17.52 | 12.51           | 2.06           | 14.82 | 10.84           | 2.21           |       |                 |
|  | 72 (22.2)        | 32.64   | 16.28 | 1.65            | 29.13          | 14.63 | 13.02           | 1.84           | 22.46 | 11.48           | 1.95           | 19.33 | 10.00           | 2.08           | 16.37 | 8.58            | 2.22           |       |                 |
|  | 57 (13.9)        | 26.50   | 26.50 | 1.63            | 23.85          | 21.24 | 21.24           | 1.82           | 18.71 | 18.71           | 1.93           | 16.26 | 16.26           | 2.06           | 13.93 | 13.93           | 2.20           |       |                 |
|  | 62 (16.7)        | 27.30   | 24.28 | 1.63            | 24.37          | 22.04 | 21.53           | 1.82           | 18.80 | 17.68           | 1.93           | 16.29 | 16.29           | 2.06           | 13.95 | 13.95           | 2.20           |       |                 |
| <b>750</b>   | 63 (17.2)††      | 27.76   | 19.72 | 1.63            | 24.77          | 17.82 | 15.96           | 1.82           | 19.04 | 14.15           | 1.93           | 16.35 | 12.41           | 2.06           | 13.82 | 10.73           | 2.20           |       |                 |
|  | 67 (19.4)        | 30.00   | 20.53 | 1.65            | 26.77          | 18.56 | 16.64           | 1.83           | 20.59 | 14.78           | 1.94           | 17.70 | 12.98           | 2.07           | 14.96 | 11.25           | 2.21           |       |                 |
|  | 72 (22.2)        | 33.03   | 16.71 | 1.66            | 29.46          | 15.02 | 13.38           | 1.85           | 22.68 | 11.80           | 1.96           | 19.51 | 10.29           | 2.08           | 16.51 | 8.84            | 2.23           |       |                 |
|  | 57 (13.9)        | 27.10   | 27.10 | 1.64            | 24.38          | 24.38 | 21.70           | 1.83           | 19.10 | 19.10           | 1.94           | 16.60 | 16.60           | 2.07           | 14.20 | 14.20           | 2.21           |       |                 |
|  | 62 (16.7)        | 27.65   | 25.20 | 1.64            | 24.69          | 22.88 | 21.82           | 1.83           | 19.13 | 19.13           | 1.94           | 16.62 | 16.62           | 2.07           | 14.22 | 14.22           | 2.21           |       |                 |
| <b>800</b>   | 63 (17.2)††      | 28.08   | 20.35 | 1.64            | 25.05          | 18.40 | 16.49           | 1.83           | 19.23 | 14.63           | 1.94           | 16.51 | 12.83           | 2.07           | 13.94 | 11.11           | 2.21           |       |                 |
|  | 67 (19.4)        | 30.34   | 21.20 | 1.66            | 27.05          | 19.18 | 17.21           | 1.84           | 20.78 | 15.29           | 1.95           | 17.85 | 13.44           | 2.08           | 15.08 | 11.66           | 2.22           |       |                 |
|  | 72 (22.2)        | 33.37   | 17.13 | 1.67            | 29.75          | 15.40 | 13.73           | 1.85           | 22.88 | 12.12           | 1.96           | 19.67 | 10.57           | 2.09           | 16.63 | 9.09            | 2.24           |       |                 |
|  | 57 (13.9)        | 27.50   | 27.50 | 1.65            | 24.72          | 24.72 | 22.00           | 1.83           | 19.36 | 19.36           | 1.95           | 16.81 | 16.81           | 2.07           | 14.38 | 14.38           | 2.22           |       |                 |
|  | 62 (16.7)        | 27.89   | 25.83 | 1.65            | 24.90          | 23.45 | 22.03           | 1.83           | 19.39 | 19.39           | 1.95           | 16.84 | 16.84           | 2.07           | 14.40 | 14.40           | 2.22           |       |                 |
| <b>835</b>   | 63 (17.2)††      | 28.29   | 20.79 | 1.65            | 25.22          | 18.80 | 16.85           | 1.84           | 19.35 | 14.96           | 1.95           | 16.61 | 13.13           | 2.07           | 14.02 | 11.38           | 2.22           |       |                 |
|  | 67 (19.4)        | 30.54   | 21.66 | 1.66            | 27.22          | 19.61 | 17.60           | 1.85           | 20.90 | 15.65           | 1.96           | 17.95 | 13.76           | 2.08           | 15.16 | 11.94           | 2.23           |       |                 |
|  | 72 (22.2)        | 33.58   | 17.41 | 1.68            | 29.93          | 15.67 | 13.97           | 1.86           | 23.00 | 12.33           | 1.97           | 19.77 | 10.77           | 2.10           | 16.70 | 9.27            | 2.24           |       |                 |
|  | 57 (13.9)        | 28.17   | 28.17 | 1.66            | 25.31          | 25.31 | 22.51           | 1.85           | 19.79 | 19.79           | 1.96           | 17.18 | 17.18           | 2.08           | 14.67 | 14.67           | 2.23           |       |                 |
|  | 62 (16.7)        | 28.32   | 26.95 | 1.66            | 25.34          | 25.34 | 22.55           | 1.85           | 19.82 | 19.82           | 1.96           | 17.20 | 17.20           | 2.08           | 14.70 | 14.70           | 2.23           |       |                 |
| <b>900</b>   | 63 (17.2)††      | 28.63   | 21.58 | 1.66            | 25.50          | 19.52 | 17.51           | 1.85           | 19.55 | 15.56           | 1.96           | 16.77 | 13.67           | 2.08           | 14.15 | 11.85           | 2.23           |       |                 |
|  | 67 (19.4)        | 30.88   | 22.51 | 1.68            | 27.51          | 20.38 | 18.31           | 1.86           | 21.10 | 16.29           | 1.97           | 18.11 | 14.34           | 2.09           | 15.28 | 12.46           | 2.24           |       |                 |
|  | 72 (22.2)        | 33.93   | 17.93 | 1.69            | 30.22          | 16.14 | 14.41           | 1.87           | 23.20 | 12.73           | 1.98           | 19.92 | 11.12           | 2.11           | 16.82 | 9.58            | 2.25           |       |                 |

See notes on page 16



DETAILED COOLING CAPACITIES# (CONTINUED)

| EVAPORATOR AIR |                | CONDENSER ENTERING AIR TEMPERATURES °F (°C)   |                 |                 |                |                 |                 |                |                 |                 |                |                 |                 |                |                 |                 |       |       |      |
|----------------|----------------|---|-----------------|-----------------|----------------|-----------------|-----------------|----------------|-----------------|-----------------|----------------|-----------------|-----------------|----------------|-----------------|-----------------|-------|-------|------|
| CFM            | EWB<br>°F (°C) | 75 (23.9)   |                 |                 | 95 (35)        |                 |                 | 105 (40.6)     |                 |                 | 115 (46.1)     |                 |                 | 125 (51.7)     |                 |                 |       |       |      |
|                |                | Capacity MBtuh  | Total Sys. KW** | Total Sys. KW** | Capacity MBtuh | Total Sys. KW** | Total Sys. KW** | Capacity MBtuh | Total Sys. KW** | Total Sys. KW** | Capacity MBtuh | Total Sys. KW** | Total Sys. KW** | Capacity MBtuh | Total Sys. KW** | Total Sys. KW** |       |       |      |
|                |                | Total   | Sens†           | Total           | Total          | Sens†           | Total           | Total          | Sens†           | Total           | Total          | Sens†           | Total           | Total          | Sens†           | Total           |       |       |      |
|                |                | <b>24ANB724A**31 Outdoor Section With CNPVS3117A**+8BCV(A,X)090-16 Indoor Section - Low</b> |                 |                 |                |                 |                 |                |                 |                 |                |                 |                 |                |                 |                 |       |       |      |
|                | 57 (13.9)      | 17.82   | 17.82           | 1.05            | 16.16          | 16.16           | 1.25            | 14.68          | 14.68           | 1.48            | 13.20          | 13.20           | 1.76            | 11.79          | 11.79           | 2.07            | 10.43 | 10.43 | 2.44 |
|                | 62 (16.7)      | 18.73   | 15.76           | 1.04            | 17.00          | 14.15           | 1.24            | 15.27          | 12.56           | 1.48            | 13.57          | 11.03           | 1.75            | 11.95          | 9.57            | 2.07            | 10.46 | 10.45 | 2.44 |
| <b>450</b>     | 63 (17.2)††    | 19.10   | 13.04           | 1.04            | 17.34          | 11.64           | 1.24            | 15.56          | 10.27           | 1.47            | 13.83          | 8.95            | 1.75            | 12.16          | 7.70            | 2.07            | 10.58 | 6.53  | 2.44 |
|                | 67 (19.4)      | 20.70   | 13.55           | 1.02            | 18.79          | 12.11           | 1.22            | 16.89          | 10.70           | 1.46            | 15.02          | 8.06            | 1.73            | 13.24          | 8.06            | 2.06            | 11.55 | 6.85  | 2.43 |
|                | 72 (22.2)      | 22.95   | 11.31           | 1.00            | 20.84          | 10.04           | 1.20            | 18.74          | 8.82            | 1.44            | 16.71          | 7.65            | 1.71            | 14.76          | 6.54            | 2.04            | 12.91 | 5.51  | 2.42 |
|                | 57 (13.9)      | 18.38   | 18.38           | 1.05            | 16.84          | 16.84           | 1.25            | 15.28          | 15.28           | 1.48            | 13.74          | 13.74           | 1.75            | 12.25          | 12.25           | 2.07            | 10.84 | 10.84 | 2.44 |
|                | 62 (16.7)      | 19.20   | 16.75           | 1.04            | 17.41          | 15.05           | 1.24            | 15.63          | 13.38           | 1.48            | 13.90          | 11.76           | 1.75            | 12.28          | 12.28           | 2.07            | 10.85 | 10.85 | 2.44 |
| <b>500</b>     | 63 (17.2)††    | 19.56   | 13.72           | 1.04            | 17.73          | 12.26           | 1.24            | 15.90          | 10.83           | 1.48            | 14.11          | 9.45            | 1.75            | 12.40          | 8.15            | 2.07            | 10.78 | 6.92  | 2.44 |
|                | 67 (19.4)      | 21.19   | 14.29           | 1.02            | 19.21          | 12.78           | 1.22            | 17.25          | 11.30           | 1.46            | 15.33          | 8.89            | 1.74            | 13.49          | 8.54            | 2.06            | 11.76 | 7.27  | 2.44 |
|                | 72 (22.2)      | 23.47   | 11.79           | 1.00            | 21.29          | 10.47           | 1.20            | 19.13          | 9.20            | 1.44            | 17.03          | 7.99            | 1.72            | 15.02          | 6.85            | 2.05            | 13.12 | 5.78  | 2.43 |
|                | 57 (13.9)      | 19.06   | 19.06           | 1.05            | 17.44          | 17.44           | 1.25            | 15.81          | 15.81           | 1.48            | 14.21          | 14.21           | 1.75            | 12.66          | 12.66           | 2.07            | 11.19 | 11.19 | 2.44 |
|                | 62 (16.7)      | 19.80   | 17.71           | 1.04            | 17.77          | 15.93           | 1.24            | 15.96          | 14.17           | 1.48            | 14.23          | 14.23           | 1.75            | 12.68          | 12.68           | 2.07            | 11.21 | 11.21 | 2.45 |
| <b>550</b>     | 63 (17.2)††    | 19.94   | 14.38           | 1.04            | 18.06          | 12.86           | 1.24            | 16.18          | 11.37           | 1.48            | 14.34          | 9.94            | 1.75            | 12.59          | 8.58            | 2.08            | 10.94 | 7.29  | 2.45 |
|                | 67 (19.4)      | 21.60   | 15.00           | 1.02            | 19.57          | 13.42           | 1.22            | 17.55          | 11.89           | 1.46            | 15.58          | 10.42           | 1.74            | 13.70          | 9.01            | 2.06            | 11.93 | 7.68  | 2.44 |
|                | 72 (22.2)      | 23.90   | 12.24           | 1.00            | 21.66          | 10.89           | 1.20            | 19.44          | 9.57            | 1.44            | 17.29          | 8.32            | 1.72            | 15.24          | 7.14            | 2.05            | 13.30 | 6.04  | 2.43 |
|                | 57 (13.9)      | 19.66   | 19.66           | 1.05            | 17.98          | 17.98           | 1.25            | 16.28          | 16.28           | 1.48            | 14.62          | 14.62           | 1.75            | 13.02          | 13.02           | 2.08            | 11.50 | 11.50 | 2.45 |
| <b>600</b>     | 62 (16.7)      | 19.96   | 18.85           | 1.04            | 18.11          | 16.78           | 1.24            | 16.31          | 16.31           | 1.48            | 14.65          | 14.65           | 1.75            | 13.04          | 13.04           | 2.08            | 11.52 | 11.52 | 2.45 |
|                | 63 (17.2)††    | 20.26   | 15.03           | 1.04            | 18.33          | 13.45           | 1.24            | 16.41          | 11.90           | 1.48            | 14.54          | 10.42           | 1.76            | 12.76          | 9.00            | 2.08            | 11.08 | 7.67  | 2.45 |
|                | 67 (19.4)      | 21.94   | 15.69           | 1.03            | 19.66          | 14.06           | 1.23            | 17.80          | 12.47           | 1.46            | 15.79          | 10.93           | 1.74            | 13.88          | 9.47            | 2.07            | 12.08 | 8.09  | 2.45 |
|                | 72 (22.2)      | 24.26   | 12.68           | 1.00            | 21.96          | 11.29           | 1.20            | 19.70          | 9.94            | 1.44            | 17.50          | 8.65            | 1.72            | 15.41          | 7.44            | 2.06            | 13.44 | 6.30  | 2.44 |
|                | 57 (13.9)      | 20.20   | 20.20           | 1.05            | 18.46          | 18.46           | 1.25            | 16.71          | 16.71           | 1.48            | 15.00          | 15.00           | 1.76            | 13.35          | 13.35           | 2.08            | 11.78 | 11.78 | 2.45 |
|                | 62 (16.7)      | 20.31   | 19.56           | 1.05            | 18.49          | 18.49           | 1.25            | 16.74          | 16.74           | 1.48            | 15.02          | 15.02           | 1.76            | 13.37          | 13.37           | 2.08            | 11.80 | 11.80 | 2.45 |
| <b>650</b>     | 63 (17.2)††    | 20.54   | 15.66           | 1.05            | 18.58          | 14.03           | 1.25            | 16.62          | 12.42           | 1.48            | 14.72          | 10.89           | 1.76            | 12.90          | 9.42            | 2.09            | 11.21 | 8.03  | 2.46 |
|                | 67 (19.4)      | 22.24   | 16.37           | 1.03            | 20.11          | 14.68           | 1.23            | 18.01          | 13.03           | 1.47            | 15.97          | 11.44           | 1.75            | 14.03          | 9.92            | 2.07            | 12.21 | 8.48  | 2.45 |
|                | 72 (22.2)      | 24.57   | 13.12           | 1.00            | 22.22          | 11.68           | 1.20            | 19.91          | 10.29           | 1.44            | 17.68          | 8.97            | 1.73            | 15.56          | 7.72            | 2.06            | 13.56 | 6.54  | 2.45 |
|                | 57 (13.9)      | 20.41   | 20.41           | 1.05            | 18.64          | 18.64           | 1.25            | 16.87          | 16.87           | 1.48            | 15.14          | 15.14           | 1.76            | 13.47          | 13.47           | 2.08            | 11.88 | 11.88 | 2.46 |
|                | 62 (16.7)      | 20.46   | 20.36           | 1.05            | 18.67          | 18.67           | 1.25            | 16.90          | 16.90           | 1.48            | 15.16          | 15.16           | 1.76            | 13.49          | 13.49           | 2.08            | 11.90 | 11.90 | 2.46 |
| <b>670</b>     | 63 (17.2)††    | 20.64   | 15.91           | 1.05            | 18.66          | 14.25           | 1.25            | 16.69          | 12.63           | 1.48            | 14.78          | 11.07           | 1.76            | 12.96          | 9.58            | 2.09            | 11.26 | 8.17  | 2.46 |
|                | 67 (19.4)      | 22.34   | 16.64           | 1.03            | 20.20          | 14.92           | 1.23            | 18.09          | 13.25           | 1.47            | 16.04          | 11.64           | 1.75            | 14.09          | 10.10           | 2.08            | 12.26 | 8.64  | 2.45 |
|                | 72 (22.2)      | 24.67   | 13.29           | 1.01            | 22.31          | 11.84           | 1.21            | 19.99          | 10.43           | 1.45            | 17.75          | 9.09            | 1.73            | 15.61          | 7.83            | 2.06            | 13.60 | 6.64  | 2.45 |
|                | 57 (13.9)      | 20.70   | 20.70           | 1.05            | 18.90          | 18.90           | 1.25            | 17.10          | 17.10           | 1.48            | 15.34          | 15.34           | 1.76            | 13.64          | 13.64           | 2.08            | 12.03 | 12.03 | 2.46 |
|                | 62 (16.7)      | 20.73   | 20.73           | 1.05            | 18.93          | 18.93           | 1.25            | 17.13          | 17.13           | 1.48            | 15.36          | 15.36           | 1.76            | 13.66          | 13.66           | 2.08            | 12.05 | 12.05 | 2.46 |
| <b>700</b>     | 63 (17.2)††    | 20.79   | 16.28           | 1.05            | 18.79          | 14.59           | 1.25            | 16.80          | 12.94           | 1.49            | 14.87          | 11.35           | 1.77            | 13.04          | 9.83            | 2.09            | 11.33 | 8.38  | 2.47 |
|                | 67 (19.4)      | 22.49   | 17.03           | 1.03            | 20.33          | 15.28           | 1.23            | 18.20          | 13.58           | 1.47            | 16.13          | 11.93           | 1.75            | 14.16          | 10.36           | 2.08            | 12.33 | 8.87  | 2.46 |
|                | 72 (22.2)      | 24.82   | 13.53           | 1.01            | 22.44          | 12.06           | 1.21            | 20.10          | 10.64           | 1.45            | 17.84          | 9.28            | 1.73            | 15.69          | 7.99            | 2.07            | 13.66 | 6.78  | 2.45 |

See notes on page 16





# DETAILED COOLING CAPACITIES# (CONTINUED)

| EVAPORATOR AIR  |             | CONDENSER ENTERING AIR TEMPERATURES ° F (° C) |                  |                |       |                        |                |       |                        |                |       |                        |                |            |                        |                |       |                        |                |       |                        |            |  |  |  |
|---|-------------|---|------------------|----------------|-------|------------------------|----------------|-------|------------------------|----------------|-------|------------------------|----------------|------------|------------------------|----------------|-------|------------------------|----------------|-------|------------------------|------------|--|--|--|
|   |             | 75 (23.9)                                     |                  |                |       | 85 (29.4)              |                |       |                        | 95 (35)        |       |                        |                | 105 (40.6) |                        |                |       | 115 (46.1)             |                |       |                        | 125 (51.7) |  |  |  |
|   |             | CFM   | EWB<br>° F (° C) | Capacity MBtuh |       | Total<br>Syst.<br>KW** | Capacity MBtuh |       | Total<br>Syst.<br>KW** | Capacity MBtuh |       | Total<br>Syst.<br>KW** | Capacity MBtuh |            | Total<br>Syst.<br>KW** | Capacity MBtuh |       | Total<br>Syst.<br>KW** | Capacity MBtuh |       | Total<br>Syst.<br>KW** |            |  |  |  |
| Total   | Sens†       |   |                  | Total          | Sens† |                        | Total          | Sens† |                        | Total          | Sens† |                        | Total          | Sens†      |                        | Total          | Sens† |                        | Total          | Sens† |                        |            |  |  |  |
| <b>24ANB760A*31 Outdoor Section With CNPV*6124A**+58CV(A,X)135-22 Indoor Section - High</b> |             |   |                  |                |       |                        |                |       |                        |                |       |                        |                |            |                        |                |       |                        |                |       |                        |            |  |  |  |
| 1500  | 57 (13.9)   | 53.72   | 53.72            | 52.08          | 52.08 | 3.91                   | 50.28          | 50.28 | 4.33                   | 48.30          | 48.30 | 4.81                   | 46.01          | 46.01      | 4.81                   | 43.38          | 43.38 | 5.36                   | 40.38          | 40.38 | 5.99                   |            |  |  |  |
|   | 62 (16.7)   | 56.39   | 48.10            | 54.23          | 47.06 | 3.93                   | 51.92          | 45.97 | 4.34                   | 49.38          | 44.79 | 4.82                   | 46.54          | 43.46      | 5.37                   | 43.43          | 43.39 | 5.99                   | 40.38          | 43.39 | 5.99                   |            |  |  |  |
|   | 63 (17.2)†† | 57.44   | 39.42            | 55.21          | 38.38 | 3.94                   | 52.82          | 37.28 | 4.35                   | 50.17          | 36.09 | 4.83                   | 47.21          | 34.79      | 5.38                   | 43.85          | 33.84 | 6.00                   | 40.38          | 33.84 | 6.00                   |            |  |  |  |
|   | 67 (19.4)   | 62.03   | 40.93            | 63.63          | 39.87 | 3.98                   | 57.01          | 38.77 | 4.40                   | 54.12          | 37.57 | 4.87                   | 50.90          | 36.25      | 5.42                   | 47.27          | 34.80 | 6.04                   | 40.38          | 34.80 | 6.04                   |            |  |  |  |
|   | 72 (22.2)   | 68.33   | 33.87            | 65.64          | 32.60 | 4.04                   | 62.75          | 31.47 | 4.46                   | 59.55          | 30.25 | 4.94                   | 55.98          | 28.93      | 5.49                   | 51.96          | 27.46 | 6.11                   | 40.38          | 27.46 | 6.11                   |            |  |  |  |
|   | 57 (13.9)   | 55.23   | 55.23            | 53.51          | 53.51 | 3.60                   | 51.63          | 51.63 | 4.38                   | 49.53          | 49.53 | 4.86                   | 47.13          | 47.13      | 5.41                   | 44.38          | 44.38 | 6.04                   | 40.38          | 44.38 | 6.04                   |            |  |  |  |
| 1625  | 62 (16.7)   | 57.29   | 50.23            | 55.06          | 49.18 | 3.97                   | 52.69          | 48.06 | 4.39                   | 50.09          | 46.83 | 4.87                   | 47.27          | 46.92      | 5.41                   | 44.44          | 44.44 | 6.04                   | 40.38          | 44.44 | 6.04                   |            |  |  |  |
|   | 63 (17.2)†† | 58.28   | 40.86            | 55.98          | 39.80 | 3.98                   | 53.49          | 38.69 | 4.40                   | 50.76          | 37.48 | 4.92                   | 47.71          | 36.16      | 5.42                   | 44.28          | 34.89 | 6.04                   | 40.38          | 34.89 | 6.04                   |            |  |  |  |
|   | 67 (19.4)   | 62.90   | 42.47            | 60.40          | 41.40 | 4.03                   | 57.71          | 40.28 | 4.44                   | 54.73          | 39.06 | 4.92                   | 51.43          | 37.73      | 5.47                   | 47.70          | 36.27 | 6.09                   | 40.38          | 36.27 | 6.09                   |            |  |  |  |
|   | 72 (22.2)   | 69.27   | 34.62            | 66.48          | 33.54 | 4.09                   | 63.48          | 32.39 | 4.50                   | 60.19          | 31.16 | 4.98                   | 56.52          | 29.81      | 5.53                   | 52.40          | 28.33 | 6.15                   | 40.38          | 28.33 | 6.15                   |            |  |  |  |
|   | 57 (13.9)   | 55.91   | 55.91            | 54.14          | 54.14 | 3.98                   | 52.22          | 52.22 | 4.40                   | 50.07          | 50.07 | 4.88                   | 47.62          | 47.62      | 5.44                   | 44.81          | 44.81 | 6.07                   | 40.38          | 44.81 | 6.07                   |            |  |  |  |
|   | 62 (16.7)   | 57.88   | 51.23            | 55.44          | 50.17 | 4.00                   | 53.03          | 49.03 | 4.41                   | 50.43          | 47.77 | 4.89                   | 47.70          | 47.70      | 5.44                   | 44.88          | 44.88 | 6.07                   | 40.38          | 44.88 | 6.07                   |            |  |  |  |
| 1685  | 63 (17.2)†† | 58.84   | 41.54            | 56.29          | 40.47 | 4.00                   | 53.77          | 39.34 | 4.42                   | 51.02          | 38.14 | 4.89                   | 47.93          | 36.81      | 5.44                   | 44.47          | 35.33 | 6.06                   | 40.38          | 35.33 | 6.06                   |            |  |  |  |
|   | 67 (19.4)   | 63.28   | 43.19            | 60.74          | 42.12 | 4.05                   | 58.00          | 40.99 | 4.46                   | 54.99          | 39.76 | 4.94                   | 51.65          | 38.43      | 5.49                   | 47.88          | 36.95 | 6.11                   | 40.38          | 36.95 | 6.11                   |            |  |  |  |
|   | 72 (22.2)   | 69.67   | 35.07            | 66.84          | 33.98 | 4.11                   | 63.79          | 32.82 | 4.52                   | 60.46          | 31.59 | 5.00                   | 56.74          | 30.23      | 5.55                   | 52.59          | 28.75 | 6.18                   | 40.38          | 28.75 | 6.18                   |            |  |  |  |
|   | 57 (13.9)   | 56.80   | 56.80            | 54.79          | 54.79 | 4.01                   | 52.83          | 52.83 | 4.43                   | 50.63          | 50.63 | 4.91                   | 48.13          | 48.13      | 5.46                   | 45.26          | 45.26 | 6.09                   | 40.38          | 45.26 | 6.09                   |            |  |  |  |
|   | 62 (16.7)   | 58.08   | 52.30            | 55.82          | 51.22 | 4.02                   | 53.40          | 50.06 | 4.43                   | 50.81          | 48.74 | 4.91                   | 48.20          | 48.20      | 5.46                   | 45.32          | 45.32 | 6.09                   | 40.38          | 45.32 | 6.09                   |            |  |  |  |
|   | 63 (17.2)†† | 59.00   | 42.26            | 56.61          | 41.18 | 4.03                   | 54.06          | 40.05 | 4.44                   | 51.27          | 38.84 | 4.92                   | 48.15          | 37.49      | 5.46                   | 44.65          | 36.01 | 6.08                   | 40.38          | 36.01 | 6.08                   |            |  |  |  |
| 1750  | 67 (19.4)   | 63.66   | 43.97            | 61.07          | 42.88 | 4.07                   | 58.29          | 41.74 | 4.48                   | 55.26          | 40.52 | 4.96                   | 51.87          | 39.18      | 5.51                   | 48.07          | 37.89 | 6.13                   | 40.38          | 37.89 | 6.13                   |            |  |  |  |
|   | 72 (22.2)   | 70.06   | 35.54            | 67.19          | 34.44 | 4.13                   | 64.11          | 33.28 | 4.55                   | 60.73          | 32.04 | 5.02                   | 56.97          | 30.68      | 5.57                   | 52.77          | 29.18 | 6.20                   | 40.38          | 29.18 | 6.20                   |            |  |  |  |
|   | 57 (13.9)   | 58.97   | 58.97            | 57.00          | 57.00 | 4.10                   | 54.88          | 54.88 | 4.52                   | 52.51          | 52.51 | 5.00                   | 49.82          | 49.82      | 5.56                   | 46.74          | 46.74 | 6.19                   | 40.38          | 46.74 | 6.19                   |            |  |  |  |
|   | 62 (16.7)   | 59.49   | 56.22            | 57.21          | 55.01 | 4.11                   | 54.96          | 54.96 | 4.52                   | 52.59          | 52.59 | 5.01                   | 49.88          | 49.88      | 5.56                   | 46.80          | 46.80 | 6.19                   | 40.38          | 46.80 | 6.19                   |            |  |  |  |
|   | 63 (17.2)†† | 60.13   | 44.93            | 57.65          | 43.84 | 4.11                   | 54.99          | 42.69 | 4.52                   | 52.08          | 41.43 | 5.00                   | 48.84          | 40.07      | 5.55                   | 45.22          | 38.55 | 6.17                   | 40.38          | 38.55 | 6.17                   |            |  |  |  |
|   | 67 (19.4)   | 64.83   | 46.84            | 62.13          | 45.74 | 4.16                   | 59.24          | 44.58 | 4.57                   | 56.07          | 43.33 | 5.04                   | 52.56          | 41.96      | 5.59                   | 48.64          | 40.44 | 6.22                   | 40.38          | 40.44 | 6.22                   |            |  |  |  |
| 2000  | 72 (22.2)   | 71.31   | 37.29            | 68.31          | 36.17 | 4.22                   | 65.08          | 34.98 | 4.63                   | 61.55          | 33.71 | 5.11                   | 57.65          | 32.34      | 5.66                   | 53.29          | 30.81 | 6.28                   | 40.38          | 30.81 | 6.28                   |            |  |  |  |
|   | 57 (13.9)   | 60.93   | 60.93            | 58.83          | 58.83 | 4.20                   | 56.57          | 56.57 | 4.61                   | 54.04          | 54.04 | 5.10                   | 51.19          | 51.19      | 5.65                   | 47.93          | 47.93 | 6.28                   | 40.38          | 47.93 | 6.28                   |            |  |  |  |
|   | 62 (16.7)   | 61.01   | 61.01            | 58.91          | 58.91 | 4.20                   | 56.65          | 56.65 | 4.62                   | 54.11          | 54.11 | 5.10                   | 51.25          | 51.25      | 5.65                   | 47.98          | 47.98 | 6.28                   | 40.38          | 47.98 | 6.28                   |            |  |  |  |
|   | 63 (17.2)†† | 61.01   | 47.48            | 58.43          | 46.37 | 4.19                   | 55.68          | 45.19 | 4.60                   | 52.69          | 43.92 | 5.08                   | 49.36          | 42.51      | 5.63                   | 45.67          | 40.93 | 6.25                   | 40.38          | 40.93 | 6.25                   |            |  |  |  |
|   | 67 (19.4)   | 65.74   | 49.60            | 62.94          | 48.48 | 4.24                   | 59.95          | 47.29 | 4.65                   | 56.69          | 46.02 | 5.13                   | 53.08          | 44.62      | 5.68                   | 49.07          | 43.04 | 6.30                   | 40.38          | 43.04 | 6.30                   |            |  |  |  |
|   | 72 (22.2)   | 72.25   | 38.84            | 69.12          | 37.79 | 4.30                   | 65.78          | 36.59 | 4.71                   | 62.14          | 35.31 | 5.19                   | 58.12          | 33.90      | 5.74                   | 53.64          | 32.37 | 6.36                   | 40.38          | 32.37 | 6.36                   |            |  |  |  |

See notes on page 16



**DETAILED COOLING CAPACITIES# (CONTINUED)**

| EVAPORATOR AIR   |             | CONDENSER ENTERING AIR TEMPERATURES °F (°C) |                 |       |                |                 |       |                |                 |       |                |                 |       |                |                 |       |                |                 |       |
|--|-------------|---|-----------------|-------|----------------|-----------------|-------|----------------|-----------------|-------|----------------|-----------------|-------|----------------|-----------------|-------|----------------|-----------------|-------|
| CFM  | EWB °F (°C) | 75 (23.9)                                   |                 |       | 85 (29.4)      |                 |       | 95 (35)        |                 |       | 105 (40.6)     |                 |       | 115 (46.1)     |                 |       | 125 (51.7)     |                 |       |
|  |             | Capacity MBtuh                              | Total Sys. KW** | Sens† | Capacity MBtuh | Total Sys. KW** | Sens† | Capacity MBtuh | Total Sys. KW** | Sens† | Capacity MBtuh | Total Sys. KW** | Sens† | Capacity MBtuh | Total Sys. KW** | Sens† | Capacity MBtuh | Total Sys. KW** | Sens† |
| <b>24ANB760A**31 Outdoor Section With CNPV*6124IA**+58CV(A,X)185-22 Indoor Section - Low</b> |             |   |                 |       |                |                 |       |                |                 |       |                |                 |       |                |                 |       |                |                 |       |
|  | 57 (13.9)   | 41.88                                       | 41.88           | 2.45  | 38.97          | 2.83            | 35.87 | 35.87          | 3.26            | 32.67 | 32.67          | 3.76            | 29.44 | 29.44          | 4.32            | 26.21 | 26.21          | 4.96            | 4.96  |
|  | 62 (16.7)   | 43.21                                       | 38.96           | 2.44  | 39.82          | 2.82            | 36.26 | 32.65          | 3.26            | 32.73 | 32.73          | 3.76            | 29.50 | 29.50          | 4.32            | 26.26 | 26.26          | 4.96            | 4.96  |
| <b>1200</b>  | 63 (17.2)†  | 44.00                                       | 31.63           | 2.44  | 40.50          | 2.82            | 36.83 | 26.20          | 3.26            | 33.50 | 33.50          | 3.76            | 30.53 | 30.53          | 4.32            | 25.45 | 18.35          | 4.97            | 4.97  |
|  | 67 (19.4)   | 47.74                                       | 33.00           | 2.41  | 43.97          | 2.79            | 40.03 | 27.42          | 3.23            | 35.98 | 24.66          | 3.73            | 31.92 | 31.92          | 4.30            | 27.89 | 19.39          | 4.95            | 4.95  |
|  | 72 (22.2)   | 52.84                                       | 26.95           | 2.37  | 48.70          | 2.76            | 44.39 | 22.08          | 3.23            | 39.99 | 19.69          | 3.71            | 35.56 | 37.38          | 4.28            | 31.15 | 15.16          | 4.92            | 4.92  |
|  | 57 (13.9)   | 43.12                                       | 43.12           | 2.46  | 40.07          | 2.84            | 36.87 | 36.87          | 3.27            | 33.57 | 33.57          | 3.77            | 30.23 | 30.23          | 4.33            | 26.88 | 26.88          | 4.97            | 4.97  |
|  | 62 (16.7)   | 43.95                                       | 40.81           | 2.45  | 40.50          | 2.84            | 36.95 | 36.84          | 3.27            | 33.63 | 33.63          | 3.77            | 30.28 | 30.28          | 4.33            | 26.93 | 26.93          | 4.97            | 4.97  |
| <b>1300</b>  | 63 (17.2)†  | 44.65                                       | 32.91           | 2.45  | 41.08          | 2.83            | 37.33 | 27.30          | 3.27            | 33.47 | 24.52          | 3.77            | 29.59 | 21.81          | 4.34            | 25.75 | 19.21          | 4.99            | 4.99  |
|  | 67 (19.4)   | 48.41                                       | 34.36           | 2.42  | 44.56          | 2.81            | 40.53 | 28.59          | 3.25            | 36.41 | 25.75          | 3.75            | 32.28 | 29.98          | 4.32            | 28.18 | 20.31          | 4.97            | 4.97  |
|  | 72 (22.2)   | 53.55                                       | 27.80           | 2.39  | 49.32          | 2.77            | 44.92 | 22.82          | 3.22            | 40.43 | 20.37          | 3.72            | 35.92 | 18.00          | 4.29            | 31.44 | 15.72          | 4.94            | 4.94  |
|  | 57 (13.9)   | 43.74                                       | 43.74           | 2.46  | 40.64          | 2.84            | 37.38 | 37.38          | 3.28            | 34.03 | 34.03          | 3.78            | 30.62 | 30.62          | 4.34            | 27.22 | 27.22          | 4.98            | 4.98  |
|  | 62 (16.7)   | 44.33                                       | 41.81           | 2.46  | 40.87          | 2.84            | 37.45 | 37.45          | 3.28            | 34.08 | 34.08          | 3.78            | 30.67 | 30.67          | 4.34            | 27.26 | 27.26          | 4.98            | 4.98  |
| <b>1355</b>  | 63 (17.2)†  | 44.98                                       | 33.80           | 2.46  | 41.36          | 2.84            | 37.57 | 27.89          | 3.28            | 33.68 | 25.07          | 3.78            | 29.76 | 22.31          | 4.35            | 25.89 | 19.67          | 5.00            | 5.00  |
|  | 67 (19.4)   | 48.74                                       | 35.09           | 2.43  | 44.85          | 2.82            | 40.78 | 29.23          | 3.26            | 36.63 | 26.34          | 3.76            | 32.45 | 23.52          | 4.33            | 28.33 | 20.81          | 4.98            | 4.98  |
|  | 72 (22.2)   | 53.90                                       | 28.26           | 2.39  | 49.62          | 2.78            | 45.17 | 23.21          | 3.23            | 40.64 | 20.73          | 3.73            | 36.09 | 18.33          | 4.30            | 31.57 | 16.03          | 4.95            | 4.95  |
|  | 57 (13.9)   | 44.23                                       | 44.23           | 2.47  | 41.08          | 2.85            | 37.78 | 37.78          | 3.29            | 34.37 | 34.37          | 3.78            | 30.92 | 30.92          | 4.35            | 27.47 | 27.47          | 4.99            | 4.99  |
|  | 62 (16.7)   | 44.63                                       | 42.61           | 2.47  | 41.19          | 2.85            | 37.85 | 37.85          | 3.29            | 34.43 | 34.43          | 3.78            | 30.97 | 30.97          | 4.35            | 27.51 | 27.51          | 4.99            | 4.99  |
| <b>1400</b>  | 63 (17.2)†  | 45.23                                       | 34.15           | 2.46  | 41.58          | 2.85            | 37.76 | 28.37          | 3.29            | 33.84 | 25.51          | 3.79            | 29.89 | 22.72          | 4.36            | 26.01 | 20.04          | 5.01            | 5.01  |
|  | 67 (19.4)   | 48.99                                       | 35.68           | 2.44  | 45.07          | 2.82            | 40.96 | 29.75          | 3.26            | 36.79 | 26.82          | 3.77            | 32.59 | 23.96          | 4.34            | 28.44 | 21.21          | 4.98            | 4.98  |
|  | 72 (22.2)   | 54.16                                       | 28.63           | 2.40  | 49.85          | 2.79            | 45.36 | 23.53          | 3.23            | 40.80 | 21.02          | 3.74            | 36.22 | 18.60          | 4.31            | 31.67 | 16.27          | 4.96            | 4.96  |
|  | 57 (13.9)   | 46.15                                       | 46.15           | 2.49  | 42.82          | 2.87            | 39.32 | 39.32          | 3.31            | 35.73 | 35.73          | 3.81            | 32.10 | 32.10          | 4.38            | 28.47 | 28.47          | 5.02            | 5.02  |
|  | 62 (16.7)   | 46.22                                       | 46.22           | 2.49  | 42.88          | 2.87            | 39.38 | 39.38          | 3.31            | 35.78 | 35.78          | 3.81            | 32.14 | 32.14          | 4.38            | 28.51 | 28.51          | 5.02            | 5.02  |
| <b>1600</b>  | 63 (17.2)†  | 46.15                                       | 36.54           | 2.49  | 42.39          | 2.88            | 38.45 | 27.43          | 3.32            | 34.43 | 24.43          | 3.82            | 30.42 | 24.48          | 4.40            | 26.50 | 21.58          | 5.04            | 5.04  |
|  | 67 (19.4)   | 49.93                                       | 38.25           | 2.46  | 45.88          | 2.85            | 41.67 | 31.99          | 3.30            | 37.38 | 28.88          | 3.80            | 33.10 | 25.86          | 4.37            | 28.89 | 22.91          | 5.02            | 5.02  |
|  | 72 (22.2)   | 55.12                                       | 30.20           | 2.43  | 50.68          | 2.82            | 46.06 | 24.90          | 3.27            | 41.37 | 22.28          | 3.77            | 36.68 | 19.76          | 4.35            | 32.02 | 17.33          | 5.00            | 5.00  |
|  | 57 (13.9)   | 47.74                                       | 47.74           | 2.52  | 44.25          | 2.90            | 40.59 | 40.59          | 3.34            | 36.85 | 36.85          | 3.84            | 33.06 | 33.06          | 4.41            | 29.28 | 29.28          | 5.06            | 5.06  |
|  | 62 (16.7)   | 47.81                                       | 47.81           | 2.52  | 44.31          | 2.90            | 40.65 | 40.65          | 3.34            | 36.89 | 36.89          | 3.84            | 33.10 | 33.10          | 4.41            | 29.31 | 29.31          | 5.06            | 5.06  |
| <b>1800</b>  | 63 (17.2)†  | 46.86                                       | 38.82           | 2.52  | 43.01          | 2.91            | 39.00 | 32.42          | 3.36            | 34.92 | 29.23          | 3.86            | 30.87 | 26.08          | 4.43            | 27.11 | 27.11          | 5.08            | 5.08  |
|  | 67 (19.4)   | 50.85                                       | 40.71           | 2.50  | 46.52          | 2.89            | 42.22 | 34.13          | 3.33            | 37.86 | 30.87          | 3.84            | 33.53 | 27.64          | 4.41            | 29.37 | 29.25          | 5.06            | 5.06  |
|  | 72 (22.2)   | 55.85                                       | 31.70           | 2.46  | 51.29          | 2.85            | 46.57 | 26.20          | 3.30            | 41.79 | 23.49          | 3.81            | 37.00 | 20.87          | 4.39            | 32.26 | 18.35          | 5.04            | 5.04  |

† Total and sensible capacities are net capacities. Blower motor heat has been subtracted.

‡ Sensible capacities shown are based on 80°F (27°C) entering air at the indoor coil. For sensible capacities at other than 80°F (27°C), deduct 835 Btuh (245 kW) per 1000 CFM (480 L/S) of indoor coil air for each degree below 80°F (27°C), or add 835 Btuh (245 kW) per 1000 CFM (480 L/S) of indoor coil air per degree above 80°F (27°C).

# Detailed cooling capacities are based on indoor and outdoor unit at the same elevation per AHRI standard 210/240-2008. If additional tubing length and/or indoor unit is located above outdoor unit, a slight variation in capacity may occur.

\*\* System kw is total of indoor and outdoor unit kilowatts.

EWB — Entering Wet Bulb

NOTE: When the required data fall between the published data, interpolation may be performed. Extrapolation is not an acceptable practice.



# CONDENSER ONLY RATINGS\*

| SST<br>° F (° C)            |     | CONDENSER ENTERING AIR TEMPERATURES ° F (° C) |            |            |            |           |             |             |             |
|-----------------------------|-----|---|------------|------------|------------|-----------|-------------|-------------|-------------|
|                             |     | 55 (12.78)                                    | 65 (18.33) | 75 (23.89) | 85 (29.44) | 95 (35.0) | 105 (40.56) | 115 (46.11) | 125 (51.67) |
| <b>24ANB724A**31 – High</b> |     |   |            |            |            |           |             |             |             |
| 30<br>(-1.11)               | TCG | 28.00   | 25.00      | 21.90      | 18.90      | 16.00     | 13.30       | 10.70       | 8.50        |
|                             | SDT | 71.60   | 81.50      | 91.40      | 101.20     | 111.00    | 120.80      | 130.80      | 140.90      |
|                             | KW  | 1.20  | 1.30       | 1.40       | 1.51       | 1.63      | 1.76        | 1.92        | 2.11        |
| 35<br>(1.67)                | TCG | 31.20   | 27.70      | 24.30      | 21.00      | 17.80     | 14.80       | 12.10       | 9.60        |
|                             | SDT | 73.20   | 83.00      | 92.80      | 102.60     | 112.40    | 122.20      | 132.10      | 142.10      |
|                             | KW  | 1.23  | 1.33       | 1.43       | 1.53       | 1.65      | 1.79        | 1.95        | 2.14        |
| 40<br>(4.44)                | TCG | 34.60   | 30.70      | 26.90      | 23.20      | 19.80     | 16.50       | 13.50       | 10.70       |
|                             | SDT | 74.80   | 84.60      | 94.40      | 104.10     | 113.90    | 123.50      | 133.40      | 143.30      |
|                             | KW  | 1.25  | 1.35       | 1.45       | 1.56       | 1.68      | 1.82        | 1.98        | 2.17        |
| 45<br>(7.22)                | TCG | 38.20   | 33.90      | 29.70      | 25.70      | 21.90     | 18.30       | 15.00       | 12.00       |
|                             | SDT | 76.60   | 86.30      | 96.00      | 105.70     | 115.20    | 124.90      | 134.70      | 144.60      |
|                             | KW  | 1.28  | 1.38       | 1.48       | 1.58       | 1.70      | 1.84        | 2.01        | 2.20        |
| 50<br>(10.0)                | TCG | 42.00   | 37.30      | 32.60      | 28.30      | 24.10     | 20.20       | 16.60       | 13.40       |
|                             | SDT | 78.40   | 88.00      | 97.60      | 107.10     | 116.70    | 126.30      | 136.00      | 145.90      |
|                             | KW  | 1.31  | 1.40       | 1.50       | 1.60       | 1.72      | 1.87        | 2.03        | 2.23        |
| 55<br>(12.78)               | TCG | 46.10   | 40.90      | 35.80      | 31.00      | 26.50     | 22.30       | 18.40       | 14.80       |
|                             | SDT | 80.20   | 89.70      | 99.20      | 108.60     | 118.10    | 127.70      | 137.40      | 147.10      |
|                             | KW  | 1.34  | 1.43       | 1.52       | 1.63       | 1.75      | 1.89        | 2.06        | 2.26        |
| 60<br>(15.56)               | TCG | 50.50   | 44.70      | 39.20      | 33.90      | 29.00     | 24.40       | 20.20       | 16.30       |
|                             | SDT | 82.00   | 91.40      | 100.80     | 110.20     | 119.70    | 129.20      | 138.80      | 148.40      |
|                             | KW  | 1.37  | 1.45       | 1.54       | 1.65       | 1.77      | 1.92        | 2.09        | 2.28        |
| <b>24ANB724A**31 – Low</b>  |     |   |            |            |            |           |             |             |             |
| 30<br>(-1.11)               | TCG | 13.50   | 13.60      | 13.30      | 12.80      | 12.20     | 11.30       | 10.40       | 9.40        |
|                             | SDT | 66.80   | 76.80      | 86.70      | 96.50      | 106.30    | 116.00      | 125.70      | 135.70      |
|                             | KW  | 0.77  | 0.89       | 1.03       | 1.18       | 1.35      | 1.53        | 1.74        | 1.96        |
| 35<br>(1.67)                | TCG | 15.20   | 15.20      | 14.90      | 14.40      | 13.70     | 12.90       | 11.90       | 10.90       |
|                             | SDT | 68.00   | 78.00      | 87.90      | 97.70      | 107.40    | 117.10      | 126.90      | 136.90      |
|                             | KW  | 0.77  | 0.89       | 1.02       | 1.17       | 1.34      | 1.53        | 1.74        | 1.98        |
| 40<br>(4.44)                | TCG | 16.90   | 16.90      | 16.60      | 16.00      | 15.30     | 14.50       | 13.50       | 12.50       |
|                             | SDT | 69.30   | 79.30      | 89.00      | 98.80      | 108.50    | 118.20      | 128.10      | 138.10      |
|                             | KW  | 0.76  | 0.88       | 1.01       | 1.17       | 1.34      | 1.53        | 1.75        | 1.99        |
| 45<br>(7.22)                | TCG | 18.80   | 18.70      | 18.30      | 17.80      | 17.00     | 16.20       | 15.20       | 14.10       |
|                             | SDT | 70.60   | 80.50      | 90.30      | 100.00     | 109.70    | 119.40      | 129.20      | 139.20      |
|                             | KW  | 0.75  | 0.87       | 1.00       | 1.16       | 1.33      | 1.53        | 1.76        | 2.01        |
| 50<br>(10.0)                | TCG | 20.80   | 20.60      | 20.20      | 19.60      | 18.90     | 18.00       | 17.00       | 15.90       |
|                             | SDT | 72.00   | 81.80      | 91.50      | 101.20     | 110.80    | 120.50      | 130.40      | 140.30      |
|                             | KW  | 0.74  | 0.86       | 0.99       | 1.15       | 1.33      | 1.53        | 1.76        | 2.02        |
| 55<br>(12.78)               | TCG | 22.90   | 22.70      | 22.20      | 21.60      | 20.80     | 19.90       | 18.80       | 17.80       |
|                             | SDT | 73.40   | 83.20      | 92.80      | 102.40     | 112.10    | 121.70      | 131.50      | 141.40      |
|                             | KW  | 0.73  | 0.84       | 0.98       | 1.14       | 1.32      | 1.53        | 1.77        | 2.03        |
| 60<br>(15.56)               | TCG | 25.10   | 24.80      | 24.30      | 23.70      | 22.80     | 21.90       | 20.80       | 19.70       |
|                             | SDT | 74.90   | 84.60      | 94.10      | 103.70     | 113.30    | 122.90      | 132.60      | 142.40      |
|                             | KW  | 0.72  | 0.83       | 0.97       | 1.13       | 1.32      | 1.53        | 1.77        | 2.04        |
| <b>24ANB736A**31 – High</b> |     |   |            |            |            |           |             |             |             |
| 30<br>(-1.11)               | TCG | 34.80   | 32.30      | 29.80      | 27.40      | 25.00     | 22.60       | 20.10       | 17.60       |
|                             | SDT | 71.10   | 80.60      | 90.10      | 99.60      | 109.10    | 118.50      | 127.80      | 137.20      |
|                             | KW  | 1.72  | 1.87       | 2.04       | 2.25       | 2.47      | 2.72        | 3.00        | 3.29        |
| 35<br>(1.67)                | TCG | 38.50   | 35.70      | 33.10      | 30.40      | 27.80     | 25.10       | 22.40       | 19.60       |
|                             | SDT | 72.60   | 82.00      | 91.50      | 100.90     | 110.30    | 119.70      | 129.00      | 138.20      |
|                             | KW  | 1.76  | 1.91       | 2.08       | 2.28       | 2.50      | 2.76        | 3.03        | 3.33        |
| 40<br>(4.44)                | TCG | 42.40   | 39.40      | 36.50      | 33.60      | 30.70     | 27.80       | 24.80       | 21.80       |
|                             | SDT | 74.20   | 83.60      | 93.00      | 102.40     | 111.70    | 120.90      | 130.10      | 139.20      |
|                             | KW  | 1.81  | 1.95       | 2.11       | 2.31       | 2.53      | 2.79        | 3.06        | 3.37        |
| 45<br>(7.22)                | TCG | 46.50   | 43.30      | 40.20      | 37.00      | 33.90     | 30.70       | 27.50       | 24.20       |
|                             | SDT | 75.90   | 85.20      | 94.50      | 103.80     | 113.00    | 122.20      | 131.30      | 140.30      |
|                             | KW  | 1.87  | 1.99       | 2.15       | 2.34       | 2.57      | 2.82        | 3.10        | 3.40        |
| 50<br>(10.0)                | TCG | 50.90   | 47.50      | 44.00      | 40.60      | 37.20     | 33.80       | 30.30       | 26.70       |
|                             | SDT | 77.60   | 86.80      | 96.10      | 105.30     | 114.40    | 123.50      | 132.50      | 141.40      |
|                             | KW  | 1.92  | 2.04       | 2.19       | 2.38       | 2.60      | 2.85        | 3.13        | 3.44        |
| 55<br>(12.78)               | TCG | 55.50   | 51.80      | 48.10      | 44.50      | 40.80     | 37.00       | 33.20       | 29.40       |
|                             | SDT | 79.40   | 88.50      | 97.70      | 106.80     | 115.90    | 124.90      | 133.80      | 142.60      |
|                             | KW  | 1.99  | 2.09       | 2.24       | 2.42       | 2.64      | 2.89        | 3.17        | 3.47        |
| 60<br>(15.56)               | TCG | 60.40   | 56.40      | 52.50      | 48.50      | 44.50     | 40.40       | 36.40       | 32.30       |
|                             | SDT | 81.20   | 90.20      | 99.30      | 108.40     | 117.40    | 126.30      | 135.00      | 143.80      |
|                             | KW  | 2.05  | 2.15       | 2.29       | 2.47       | 2.68      | 2.93        | 3.20        | 3.51        |

**24ANB7**

See notes on page 19

**CONDENSER ONLY RATINGS\* CONTINUED**

**24ANB7**

| SST<br>° F (° C)            |     | CONDENSER ENTERING AIR TEMPERATURES ° F (° C) |            |            |            |           |             |             |             |
|-----------------------------|-----|---|------------|------------|------------|-----------|-------------|-------------|-------------|
|                             |     | 55 (12.78)                                    | 65 (18.33) | 75 (23.89) | 85 (29.44) | 95 (35.0) | 105 (40.56) | 115 (46.11) | 125 (51.67) |
| <b>24ANB736A**31 – Low</b>  |     |   |            |            |            |           |             |             |             |
| 30<br>(-1.11)               | TCG | 20.70   | 20.10      | 19.50      | 18.80      | 18.00     | 16.90       | 15.60       | 14.10       |
|                             | SDT | 65.70   | 75.40      | 85.10      | 94.80      | 104.50    | 114.10      | 123.60      | 133.10      |
|                             | KW  | 1.18  | 1.31       | 1.47       | 1.66       | 1.88      | 2.13        | 2.43        | 2.78        |
| 35<br>(1.67)                | TCG | 23.10   | 22.40      | 21.80      | 21.00      | 20.10     | 19.00       | 17.60       | 16.00       |
|                             | SDT | 66.80   | 76.50      | 86.10      | 95.80      | 105.40    | 115.00      | 124.50      | 134.00      |
|                             | KW  | 1.16  | 1.30       | 1.46       | 1.65       | 1.87      | 2.12        | 2.42        | 2.76        |
| 40<br>(4.44)                | TCG | 25.60   | 25.00      | 24.20      | 23.40      | 22.40     | 21.20       | 19.80       | 18.10       |
|                             | SDT | 68.00   | 77.60      | 87.30      | 96.90      | 106.50    | 116.00      | 125.40      | 134.90      |
|                             | KW  | 1.13  | 1.28       | 1.45       | 1.64       | 1.86      | 2.11        | 2.41        | 2.75        |
| 45<br>(7.22)                | TCG | 28.40   | 27.70      | 26.90      | 26.00      | 24.90     | 23.70       | 22.10       | 20.30       |
|                             | SDT | 69.30   | 78.80      | 88.40      | 98.00      | 107.50    | 117.00      | 126.40      | 135.80      |
|                             | KW  | 1.11  | 1.26       | 1.43       | 1.63       | 1.85      | 2.10        | 2.40        | 2.73        |
| 50<br>(10.0)                | TCG | 31.40   | 30.60      | 29.70      | 28.70      | 27.60     | 26.20       | 24.60       | 22.70       |
|                             | SDT | 70.60   | 80.10      | 89.60      | 99.20      | 108.60    | 118.00      | 127.40      | 136.70      |
|                             | KW  | 1.08  | 1.24       | 1.42       | 1.61       | 1.84      | 2.09        | 2.39        | 2.72        |
| 55<br>(12.78)               | TCG | 34.60   | 33.70      | 32.70      | 31.70      | 30.40     | 29.00       | 27.30       | 25.30       |
|                             | SDT | 72.00   | 81.50      | 90.90      | 100.40     | 109.80    | 119.10      | 128.40      | 137.60      |
|                             | KW  | 1.06  | 1.22       | 1.40       | 1.60       | 1.83      | 2.08        | 2.38        | 2.71        |
| 60<br>(15.56)               | TCG | 38.10   | 37.00      | 36.00      | 34.80      | 33.50     | 31.90       | 30.10       | 28.00       |
|                             | SDT | 73.50   | 82.90      | 92.30      | 101.60     | 111.00    | 120.20      | 129.40      | 138.60      |
|                             | KW  | 1.03  | 1.20       | 1.38       | 1.59       | 1.82      | 2.07        | 2.36        | 2.69        |
| <b>24ANB748A**31 – High</b> |     |   |            |            |            |           |             |             |             |
| 30<br>(-1.11)               | TCG | 44.30   | 42.30      | 39.70      | 36.70      | 33.50     | 30.30       | 27.10       | 24.20       |
|                             | SDT | 69.60   | 79.40      | 88.90      | 98.30      | 107.70    | 117.10      | 126.50      | 136.00      |
|                             | KW  | 2.00  | 2.27       | 2.56       | 2.88       | 3.24      | 3.67        | 4.16        | 4.76        |
| 35<br>(1.67)                | TCG | 49.40   | 47.10      | 44.10      | 40.80      | 37.30     | 33.80       | 30.40       | 27.20       |
|                             | SDT | 71.20   | 80.80      | 90.30      | 99.60      | 108.90    | 118.20      | 127.60      | 137.00      |
|                             | KW  | 2.04  | 2.31       | 2.60       | 2.91       | 3.28      | 3.70        | 4.21        | 4.80        |
| 40<br>(4.44)                | TCG | 54.80   | 52.00      | 48.70      | 45.10      | 41.30     | 37.50       | 33.90       | 30.40       |
|                             | SDT | 72.80   | 82.30      | 91.60      | 100.90     | 110.20    | 119.40      | 128.70      | 138.00      |
|                             | KW  | 2.08  | 2.35       | 2.63       | 2.95       | 3.32      | 3.75        | 4.25        | 4.86        |
| 45<br>(7.22)                | TCG | 60.40   | 57.20      | 53.50      | 49.60      | 45.50     | 41.40       | 37.50       | 33.80       |
|                             | SDT | 74.40   | 83.80      | 93.00      | 102.20     | 111.40    | 120.60      | 129.80      | 139.10      |
|                             | KW  | 2.12  | 2.38       | 2.67       | 2.99       | 3.36      | 3.79        | 4.31        | 4.91        |
| 50<br>(10.0)                | TCG | 66.10   | 62.60      | 58.60      | 54.30      | 49.90     | 45.50       | 41.40       | 37.40       |
|                             | SDT | 76.00   | 85.30      | 94.50      | 103.60     | 112.70    | 121.80      | 131.00      | 140.20      |
|                             | KW  | 2.15  | 2.41       | 2.70       | 3.02       | 3.40      | 3.84        | 4.36        | 4.98        |
| 55<br>(12.78)               | TCG | 72.10   | 68.10      | 63.80      | 59.10      | 54.40     | 49.80       | 45.30       | 41.10       |
|                             | SDT | 77.60   | 86.80      | 95.90      | 105.00     | 114.00    | 123.10      | 132.10      | 141.30      |
|                             | KW  | 2.18  | 2.44       | 2.73       | 3.06       | 3.44      | 3.89        | 4.42        | 5.04        |
| 60<br>(15.56)               | TCG | 78.20   | 73.80      | 69.10      | 64.10      | 59.10     | 54.20       | 49.50       | 44.90       |
|                             | SDT | 79.30   | 88.40      | 97.40      | 106.40     | 115.40    | 124.30      | 133.30      | 142.30      |
|                             | KW  | 2.20  | 2.46       | 2.76       | 3.09       | 3.48      | 3.94        | 4.48        | 5.11        |
| <b>24ANB748A**31 – Low</b>  |     |   |            |            |            |           |             |             |             |
| 30<br>(-1.11)               | TCG | 27.10   | 26.70      | 25.90      | 24.60      | 23.00     | 21.00       | 18.70       | 16.20       |
|                             | SDT | 65.00   | 74.70      | 84.40      | 93.90      | 103.40    | 112.80      | 122.20      | 131.50      |
|                             | KW  | 1.44  | 1.66       | 1.90       | 2.18       | 2.49      | 2.84        | 3.25        | 3.71        |
| 35<br>(1.67)                | TCG | 30.20   | 29.70      | 28.80      | 27.50      | 25.90     | 23.80       | 21.50       | 18.80       |
|                             | SDT | 66.00   | 75.70      | 85.30      | 94.80      | 104.30    | 113.70      | 123.10      | 132.40      |
|                             | KW  | 1.41  | 1.64       | 1.88       | 2.16       | 2.47      | 2.83        | 3.23        | 3.69        |
| 40<br>(4.44)                | TCG | 33.50   | 33.00      | 32.10      | 30.70      | 29.00     | 26.90       | 24.40       | 21.70       |
|                             | SDT | 67.10   | 76.80      | 86.30      | 95.80      | 105.30    | 114.60      | 124.00      | 133.30      |
|                             | KW  | 1.38  | 1.61       | 1.86       | 2.14       | 2.45      | 2.81        | 3.22        | 3.68        |
| 45<br>(7.22)                | TCG | 37.00   | 36.50      | 35.60      | 34.20      | 32.40     | 30.20       | 27.70       | 24.80       |
|                             | SDT | 68.30   | 77.90      | 87.40      | 96.90      | 106.30    | 115.60      | 124.90      | 134.10      |
|                             | KW  | 1.35  | 1.58       | 1.84       | 2.12       | 2.44      | 2.79        | 3.20        | 3.66        |
| 50<br>(10.0)                | TCG | 40.90   | 40.30      | 39.40      | 37.90      | 36.10     | 33.80       | 31.20       | 28.20       |
|                             | SDT | 69.50   | 79.10      | 88.60      | 98.00      | 107.40    | 116.60      | 125.80      | 135.00      |
|                             | KW  | 1.32  | 1.56       | 1.81       | 2.10       | 2.42      | 2.78        | 3.18        | 3.64        |
| 55<br>(12.78)               | TCG | 45.00   | 44.50      | 43.50      | 42.00      | 40.10     | 37.80       | 35.00       | 31.90       |
|                             | SDT | 70.90   | 80.40      | 89.80      | 99.20      | 108.50    | 117.70      | 126.90      | 136.00      |
|                             | KW  | 1.29  | 1.53       | 1.79       | 2.08       | 2.40      | 2.76        | 3.16        | 3.62        |
| 60<br>(15.56)               | TCG | 49.60   | 49.00      | 47.90      | 46.40      | 44.40     | 42.00       | 39.20       | 35.90       |
|                             | SDT | 72.30   | 81.80      | 91.10      | 100.40     | 109.70    | 118.80      | 127.90      | 137.00      |
|                             | KW  | 1.26  | 1.50       | 1.77       | 2.06       | 2.38      | 2.74        | 3.15        | 3.60        |

See notes on page 19

# CONDENSER ONLY RATINGS\* CONTINUED

| SST<br>° F (° C)            |     | CONDENSER ENTERING AIR TEMPERATURES ° F (° C) |            |            |            |           |             |             |             |
|-----------------------------|-----|---|------------|------------|------------|-----------|-------------|-------------|-------------|
|                             |     | 55 (12.78)                                    | 65 (18.33) | 75 (23.89) | 85 (29.44) | 95 (35.0) | 105 (40.56) | 115 (46.11) | 125 (51.67) |
| <b>24ANB760A**31 – High</b> |     |   |            |            |            |           |             |             |             |
| 30<br>(-1.11)               | TCG | 48.30   | 46.50      | 44.80      | 42.90      | 40.90     | 38.60       | 36.00       | 32.90       |
|                             | SDT | 72.70   | 81.80      | 91.10      | 100.50     | 109.90    | 119.20      | 128.50      | 137.70      |
|                             | KW  | 2.40  | 2.67       | 2.98       | 3.33       | 3.74      | 4.20        | 4.73        | 5.32        |
| 35<br>(1.67)                | TCG | 53.20   | 51.30      | 49.50      | 47.50      | 45.30     | 42.80       | 40.00       | 36.70       |
|                             | SDT | 74.30   | 83.40      | 92.60      | 101.90     | 111.20    | 120.40      | 129.60      | 138.80      |
|                             | KW  | 2.46  | 2.72       | 3.03       | 3.38       | 3.79      | 4.26        | 4.79        | 5.39        |
| 40<br>(4.44)                | TCG | 58.60   | 56.50      | 54.50      | 52.40      | 50.00     | 47.40       | 44.30       | 40.80       |
|                             | SDT | 76.00   | 85.00      | 94.20      | 103.40     | 112.60    | 121.70      | 130.80      | 139.90      |
|                             | KW  | 2.52  | 2.78       | 3.08       | 3.44       | 3.85      | 4.32        | 4.86        | 5.47        |
| 45<br>(7.22)                | TCG | 64.30   | 62.10      | 59.90      | 57.60      | 55.10     | 52.20       | 48.90       | 45.20       |
|                             | SDT | 77.80   | 86.70      | 95.80      | 104.90     | 114.00    | 123.10      | 132.10      | 141.10      |
|                             | KW  | 2.58  | 2.84       | 3.14       | 3.50       | 3.91      | 4.38        | 4.92        | 5.54        |
| 50<br>(10.0)                | TCG | 70.50   | 68.10      | 65.80      | 63.20      | 60.50     | 57.40       | 53.80       | 49.80       |
|                             | SDT | 79.70   | 88.60      | 97.50      | 106.50     | 115.50    | 124.50      | 133.40      | 142.20      |
|                             | KW  | 2.66  | 2.91       | 3.21       | 3.56       | 3.97      | 4.45        | 4.99        | 5.61        |
| 55<br>(12.78)               | TCG | 77.10   | 74.60      | 72.00      | 69.30      | 66.30     | 62.90       | 59.10       | 54.80       |
|                             | SDT | 81.80   | 90.50      | 99.40      | 108.30     | 117.10    | 126.00      | 134.80      | 143.50      |
|                             | KW  | 2.74  | 2.98       | 3.28       | 3.63       | 4.04      | 4.52        | 5.07        | 5.69        |
| 60<br>(15.56)               | TCG | 84.10   | 81.40      | 78.60      | 75.70      | 72.40     | 68.80       | 64.70       | 60.10       |
|                             | SDT | 84.00   | 92.60      | 101.30     | 110.00     | 118.80    | 127.50      | 136.10      | 144.70      |
|                             | KW  | 2.82  | 3.06       | 3.35       | 3.71       | 4.12      | 4.60        | 5.15        | 5.77        |
| <b>24ANB760A**31 – Low</b>  |     |   |            |            |            |           |             |             |             |
| 30<br>(-1.11)               | TCG | 31.20   | 31.30      | 30.60      | 29.30      | 27.40     | 25.10       | 22.40       | 19.30       |
|                             | SDT | 66.60   | 76.30      | 85.90      | 95.30      | 104.70    | 113.90      | 123.10      | 132.30      |
|                             | KW  | 1.31  | 1.68       | 2.12       | 2.66       | 3.29      | 4.03        | 4.91        | 5.94        |
| 35<br>(1.67)                | TCG | 35.00   | 34.90      | 34.20      | 32.90      | 31.00     | 28.60       | 25.80       | 22.60       |
|                             | SDT | 67.80   | 77.50      | 87.10      | 96.50      | 105.70    | 115.00      | 124.10      | 133.30      |
|                             | KW  | 1.29  | 1.66       | 2.11       | 2.65       | 3.28      | 4.03        | 4.91        | 5.94        |
| 40<br>(4.44)                | TCG | 38.90   | 38.90      | 38.10      | 36.70      | 34.80     | 32.30       | 29.40       | 26.10       |
|                             | SDT | 69.20   | 78.80      | 88.30      | 97.60      | 106.90    | 116.00      | 125.10      | 134.30      |
|                             | KW  | 1.27  | 1.65       | 2.10       | 2.63       | 3.27      | 4.02        | 4.90        | 5.94        |
| 45<br>(7.22)                | TCG | 43.20   | 43.10      | 42.30      | 40.80      | 38.80     | 36.30       | 33.30       | 29.90       |
|                             | SDT | 70.60   | 80.20      | 89.50      | 98.80      | 108.00    | 117.10      | 126.20      | 135.20      |
|                             | KW  | 1.26  | 1.63       | 2.08       | 2.62       | 3.26      | 4.01        | 4.90        | 5.93        |
| 50<br>(10.0)                | TCG | 47.80   | 47.60      | 46.70      | 45.20      | 43.10     | 40.50       | 37.40       | 33.90       |
|                             | SDT | 72.10   | 81.50      | 90.80      | 100.00     | 109.20    | 118.20      | 127.20      | 136.30      |
|                             | KW  | 1.24  | 1.61       | 2.06       | 2.60       | 3.24      | 4.00        | 4.89        | 5.93        |
| 55<br>(12.78)               | TCG | 52.60   | 52.30      | 51.40      | 49.80      | 47.70     | 45.00       | 41.80       | 38.20       |
|                             | SDT | 73.60   | 83.00      | 92.20      | 101.30     | 110.40    | 119.40      | 128.40      | 137.30      |
|                             | KW  | 1.21  | 1.59       | 2.04       | 2.58       | 3.22      | 3.98        | 4.87        | 5.92        |
| 60<br>(15.56)               | TCG | 57.70   | 57.40      | 56.40      | 54.80      | 52.50     | 49.70       | 46.40       | 42.70       |
|                             | SDT | 75.20   | 84.40      | 93.60      | 102.60     | 111.70    | 120.60      | 129.50      | 138.40      |
|                             | KW  | 1.19  | 1.56       | 2.01       | 2.56       | 3.20      | 3.96        | 4.86        | 5.90        |

\* AHRI listing applies only to systems shown in Combination Ratings table.

**KW** – Outdoor Unit Kilowatts Only.

**SDT** – Saturated Temperature Leaving Compressor (° F)

**SST** – Saturated Temperature Entering Compressor (° F/° C)

**TCG** – Gross Cooling Capacity (1000 Btuh)

**24ANB7**

# GUIDE SPECIFICATIONS

## GENERAL

### System Description

Outdoor-mounted, air-cooled, split-system air conditioner unit suitable for ground or rooftop installation. Unit consists of a hermetic compressor, an air-cooled coil, propeller-type condenser fan, and a control box. Unit will discharge supply air upward as shown on contract drawings. Unit will be used in a refrigeration circuit to match up to a packaged fan coil or coil unit.

### Quality Assurance

- Unit will be rated in accordance with the latest edition of AHRI Standard 210.
- Unit will be certified for capacity and efficiency, and listed in the latest AHRI directory.
- Unit construction will comply with latest edition of ANSI/ASHRAE and with NEC.
- Unit will be constructed in accordance with UL standards and will carry the UL label of approval. Unit will have c-UL approval.
- Unit cabinet will be capable of withstanding Federal Test Method Standard No. 141 (Method 6061) 500-hr salt spray test.
- Air-cooled condenser coils will be leak tested and pressure tested.
- Unit constructed in ISO9001 approved facility.

### Delivery, Storage, and Handling

- Unit will be shipped as single package only and is stored and handled per unit manufacturer's recommendations.

### Warranty (for inclusion by specifying engineer)

- U.S. and Canada only.

## PRODUCTS

### Equipment

- Factory assembled, single piece, air-cooled air conditioner unit. Contained within the unit enclosure is all factory wiring, piping, controls, compressor, refrigerant charge Puron® (R-410A), and special features required prior to field start-up.

### Unit Cabinet

- Unit cabinet, including louvered coil guard, will be constructed of galvanized steel, bonderized, and coated with a powder coat paint.

### Fans

- Condenser fan will be direct-drive propeller type, discharging air upward.

## AIR-COOLED, SPLIT-SYSTEM AIR CONDITIONER

24ANB7

2 TO 5 NOMINAL TONS

- Condenser fan motors will be totally enclosed, 1-phase type with class B insulation and permanently lubricated bearings. Shafts will be corrosion resistant.
- Fan blades will be statically and dynamically balanced.
- Condenser fan openings will be equipped with coated steel wire safety guards.

### Compressor

- Compressor will be hermetically sealed.
- Compressor will be mounted on rubber vibration isolators.

### Condenser Coil

- Condenser coil will be air cooled.
- Coil will be constructed of aluminum fins mechanically bonded to copper tubes which are then cleaned, dehydrated, and sealed.

### Refrigeration Components

- Refrigeration circuit components will include liquid-line shutoff valve with sweat connections, vapor-line shutoff valve with sweat connections, system charge of Puron® (R-410A) refrigerant, and compressor oil.
- Unit will be equipped with high-pressure switch, low pressure switch and filter drier for Puron refrigerant.

### Operating Characteristics

- The capacity of the unit will meet or exceed \_\_\_\_\_ Btuh at a suction temperature of \_\_\_\_\_ °F/°C. The power consumption at full load will not exceed \_\_\_\_\_ kW.
- Combination of the unit and the evaporator or fan coil unit will have a total net cooling capacity of \_\_\_\_\_ Btuh or greater at conditions of \_\_\_\_\_ CFM entering air temperature at the evaporator at \_\_\_\_\_ °F/°C wet bulb and \_\_\_\_\_ °F/°C dry bulb, and air entering the unit at \_\_\_\_\_ °F/°C.
- The system will have a SEER of \_\_\_\_\_ Btuh/watt or greater at DOE conditions.

### Electrical Requirements

- Nominal unit electrical characteristics will be \_\_\_\_\_ v, single phase, 60 hz. The unit will be capable of satisfactory operation within voltage limits of \_\_\_\_\_ v to \_\_\_\_\_ v.
- Unit electrical power will be single point connection.
- Control circuit will be 24v.

### Special Features

- Refer to section of this literature identifying accessories and descriptions for specific features and available enhancements.

## SYSTEM DESIGN SUMMARY

1. Intended for outdoor installation with free air inlet and outlet. Outdoor fan external static pressure available is less than 0.01-in. wc.
2. Minimum outdoor operating air temperature without low-ambient operation accessory is 55°F (12.8°C).
3. The maximum outdoor operating ambient in cooling mode is 125°F (51.67°C) when operating voltage is 230v. For 208v applications, the maximum outdoor ambient is 120°F (48.9°C).
4. For reliable operation, unit should be level in all horizontal planes.
5. For interconnecting refrigerant tube lengths greater than 80 ft (23.4 m) and/or elevation differences between indoor and outdoor units greater than 20 ft (6.1 m), consult Residential Piping and Longline Guideline and Service Manual available from equipment distributor.
6. If any refrigerant tubing is buried, provide a 6 in. (152.4 mm) vertical rise to the valve connections at the unit. Refrigerant tubing lengths up to 36 in. (914.4 mm) may be buried without further consideration. Do not bury refrigerant lines longer than 36 in. (914.4 mm).
7. Use only copper wire for electric connection at unit. Aluminum and clad aluminum are not acceptable for the type of connector provided.
8. Do not apply capillary tube indoor coils to these units.
9. Factory-supplied filter drier must be installed.

